



INTERNATIONAL  
GEMOLOGICAL  
INSTITUTE

ELECTRONIC COPY

LABORATORY GROWN DIAMOND REPORT

December 21, 2024  
IGI Report Number LG670431304  
Description LABORATORY GROWN DIAMOND  
Shape and Cutting Style ROUND BRILLIANT  
Measurements 10.42 - 10.49 x 6.32 mm

GRADING RESULTS

Carat Weight 4.19 CARATS  
Color Grade E  
Clarity Grade VVS 2  
Cut Grade IDEAL

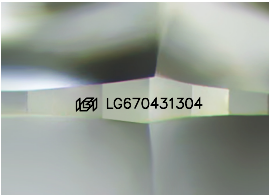
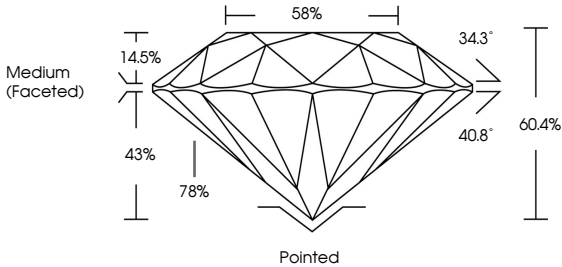
ADDITIONAL GRADING INFORMATION

Polish EXCELLENT  
Symmetry EXCELLENT  
Fluorescence NONE  
Inscription(s) IGI LG670431304

Comments: HEARTS & ARROWS  
This Laboratory Grown Diamond was created by  
Chemical Vapor Deposition (CVD) growth process.  
Type IIa

LG670431304  
Report verification at igi.org

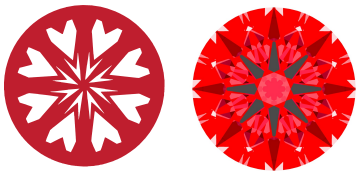
PROPORTIONS



Sample Image Used

LIGHT PERFORMANCE REPORT

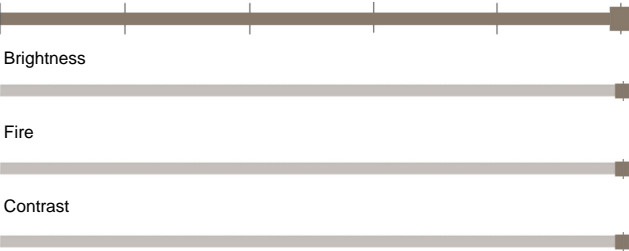
Light Performance Grade: Exceptional



Ideal-Scope representation

Low Moderate High Superior Exceptional

Light Performance



COLOR

D E F G H I J Faint Very Light Light

CLARITY

IF	VVS 1 - 2	VS 1 - 2	SI 1 - 2	I 1 - 3
Internally Flawless	Very Very Slightly Included	Very Slightly Included	Slightly Included	Included



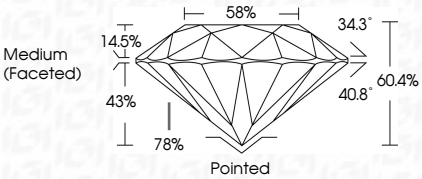
© IGI 2020, International Gemological Institute

FD - 10 20

THIS DOCUMENT WAS PRODUCED WITH THE FOLLOWING SECURITY MEASURES: SPECIAL DOCUMENT PAPER, INK SCREENS, WATERMARK, BACKGROUND DESIGNS, HOLOGRAM AND OTHER SECURITY FEATURES NOT LISTED AND DO EXCEED DOCUMENT SECURITY INDUSTRY GUIDELINES.



December 21, 2024  
IGI Report Number LG670431304  
Description LABORATORY GROWN DIAMOND  
Shape and Cutting Style ROUND BRILLIANT  
Measurements 10.42 - 10.49 X 6.32 MM  
GRADING RESULTS  
Carat Weight 4.19 CARATS  
Color Grade E  
Clarity Grade VVS 2  
Cut Grade IDEAL



ADDITIONAL GRADING INFORMATION

Polish EXCELLENT  
Symmetry EXCELLENT  
Fluorescence NONE  
Inscription(s) IGI LG670431304

Comments: HEARTS & ARROWS  
This Laboratory Grown Diamond was created by  
Chemical Vapor Deposition (CVD) growth process.  
Type IIa



IGI

December 21, 2024  
IGI Report No LG670431304  
ROUND BRILLIANT  
10.42 - 10.49 X 6.32 MM  
Carat Weight 4.19 CARATS  
Color Grade E  
Clarity Grade VVS 2  
Cut Grade IDEAL  
Depth 60.4%  
Table 58%  
Girdle Medium (Faceted)  
Culet Pointed  
Polish EXCELLENT  
Symmetry EXCELLENT  
Fluorescence NONE  
Inscription(s) IGI LG670431304  
Comments: HEARTS & ARROWS  
This Laboratory Grown Diamond was created by Chemical Vapor Deposition (CVD) growth process.  
Type IIa