

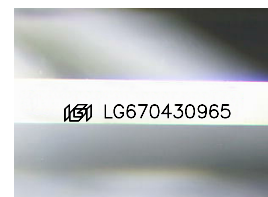
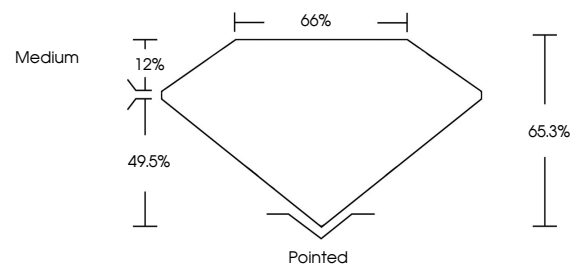


ELECTRONIC COPY

LABORATORY GROWN DIAMOND REPORT

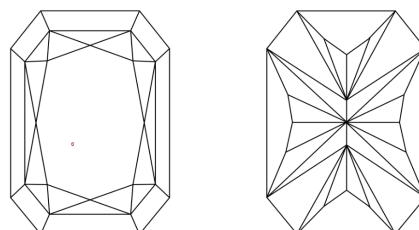
LG670430965
Report verification at igi.org

PROPORTIONS



Sample Image Used

CLARITY CHARACTERISTICS



KEY TO SYMBOLS

Red symbols indicate internal characteristics.
Green symbols indicate external characteristics.

COLOR

D E F G H I J Faint Very Light Light

CLARITY

IF VWS¹⁻² VS¹⁻² SI¹⁻² I¹⁻³

Internally Flawless	Very Very Slightly Included	Very Slightly Included	Slightly Included	Included
------------------------	--------------------------------	---------------------------	----------------------	----------

LABORATORY GROWN DIAMOND REPORT



December 19, 2024

IGI Report Number LG670430965

Description **LABORATORY GROWN DIAMOND**

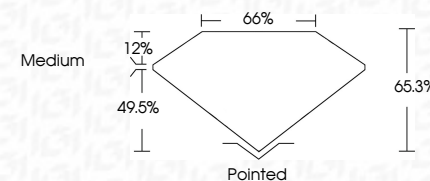
Shape and Cutting Style

CUT CORNERED
RECTANGULAR MODIFIED
BRILLIANT

Measurements 10.39 X 7.23 X 4.72 MM

GRADING RESULTS

Carat Weight **3.08 CARATS**

Color Grade GClarity Grade VVS 2

ADDITIONAL GRADING INFORMATION

Polish **EXCELLENT**Symmetry **EXCELLENT**Fluorescence NONEInscription(s) 151 LG670430965

Comments: This Laboratory Grown Diamond was created by Chemical Vapor Deposition (CVD) growth process.
Type IIa



© IGI 2020, International Gemological Institute

FD - 10 20

www.igi.org

December 19, 2024	CU Report No. LG270409045	CU CORNERED RECT. MODIFIED BRILLIANT
10.39 X 7.23 X 4.72 MM		
Carat Weight	3.08 CARATS	
Color Grade	G	
Clarity Grade	VVS 2	
Depth	65.5%	
Table	65%	
Girdle	Medium	
Culet	Pointed	
Polish	EXCELLENT	
Symmetry	EXCELLENT	
Fluorescence	NONE	
Inscriptions(s)	681 LG270409045	

Comments: Laboratory Grown Diamond was created by Chemical Vapor Deposition (CVD) growth process.

Type IIa