



ELECTRONIC COPY

LABORATORY GROWN DIAMOND REPORT

December 23, 2024
IGI Report Number LG670430205
Description LABORATORY GROWN DIAMOND
Shape and Cutting Style EMERALD CUT
Measurements 14.77 X 9.86 X 6.80 MM

GRADING RESULTS

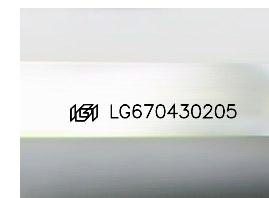
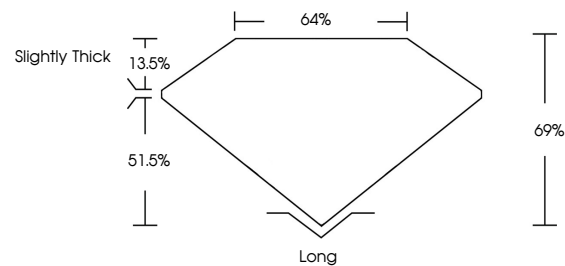
Carat Weight 10.20 CARATS
Color Grade G
Clarity Grade VVS 2

ADDITIONAL GRADING INFORMATION

Polish EXCELLENT
Symmetry EXCELLENT
Fluorescence NONE
Inscription(s) IGI LG670430205

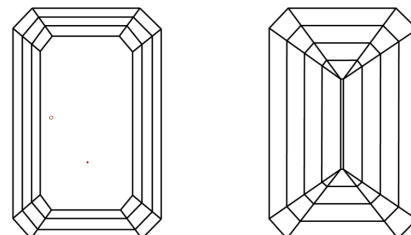
Comments: This Laboratory Grown Diamond was created by Chemical Vapor Deposition (CVD) growth process. Type IIa

PROPORTIONS



Sample Image Used

CLARITY CHARACTERISTICS



KEY TO SYMBOLS

Red symbols indicate internal characteristics.
Green symbols indicate external characteristics.

COLOR

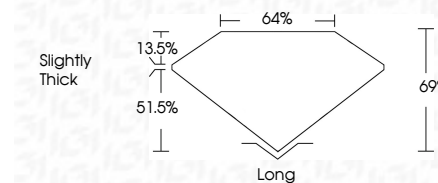
D E F G H I J Faint Very Light Light

CLARITY

IF WS¹⁻² VS¹⁻² SI¹⁻² I¹⁻³
Internally Flawless Very Very Slightly Included Very Slightly Included Slightly Included Included



December 23, 2024
IGI Report Number LG670430205
Description LABORATORY GROWN DIAMOND
Shape and Cutting Style EMERALD CUT
Measurements 14.77 X 9.86 X 6.80 MM
GRADING RESULTS
Carat Weight 10.20 CARATS
Color Grade G
Clarity Grade VVS 2



ADDITIONAL GRADING INFORMATION

Polish EXCELLENT
Symmetry EXCELLENT
Fluorescence NONE
Inscription(s) IGI LG670430205
Comments: This Laboratory Grown Diamond was created by Chemical Vapor Deposition (CVD) growth process. Type IIa



IGI



December 23, 2024
IGI Report No LG670430205
EMERALD CUT
14.77 X 9.86 X 6.80 MM
10.20 CARATS
Color Grade G
Clarity Grade VVS 2
Depth 69%
Table 64%
Girdle Slightly Thick
Culet Long
Polish EXCELLENT
Symmetry EXCELLENT
Fluorescence NONE
Inscription(s) IGI LG670430205
Comments: This Laboratory Grown Diamond was created by Chemical Vapor Deposition (CVD) growth process. Type IIa