

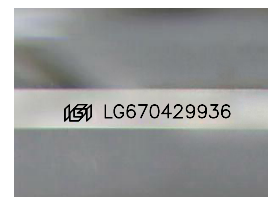
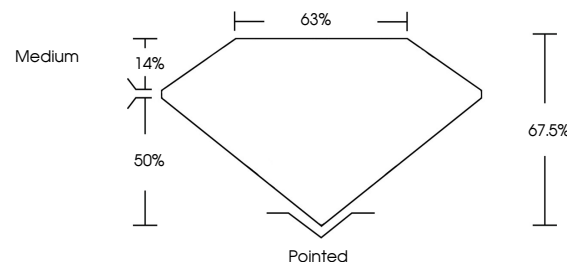


ELECTRONIC COPY

LABORATORY GROWN DIAMOND REPORT

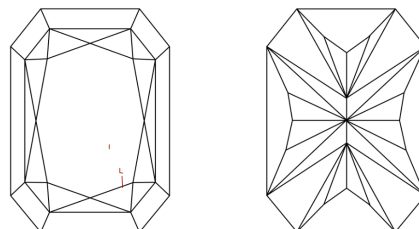
LG670429936
Report verification at lgi.org

PROPORTIONS



Sample Image Used

CLARITY CHARACTERISTICS



KEY TO SYMBOLS

Red symbols indicate internal characteristics.
Green symbols indicate external characteristics.

COLOR

D E F G H I J Faint Very Light Light

CLARITY

IF	VS ¹⁻²	VS ¹⁻²	SI ¹⁻²	I ¹⁻³
Internally Flawless	Very Very Slightly Included	Very Slightly Included	Slightly Included	Included

LABORATORY GROWN DIAMOND REPORT



December 23, 2024

IGI Report Number LG670429936

Description	LABORATORY GROWN DIAMOND
-------------	--------------------------

Shape and Cutting Style

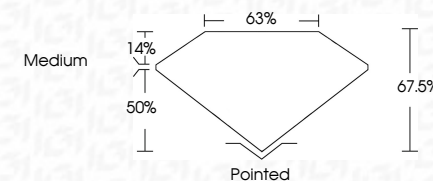
Measurements **9.06 X 6.24 X 4.21 MM**

GRADING RESULTS

Carat Weight 2.10 CARATS

Color Grade

Clarity Grade VS 2



ADDITIONAL GRADING INFORMATION

Polish **EXCELLENT**Symmetry **EXCELLENT**Fluorescence NONEInscription(s) LG670429936

Comments: This Laboratory Grown Diamond was created by Chemical Vapor Deposition (CVD) growth process.
Type IIa



© IGI 2020, International Gemological Institute

FD - 10 20

www.igi.org

THIS DOCUMENT WAS PRODUCED WITH THE FOLLOWING SECURITY MEASURES: SPECIAL DOCUMENT PAPER, INK SCREENS, WATERMARK BACKGROUND DESIGNS, HOLOGRAM AND OTHER SECURITY FEATURES NOT LISTED AND DO EXCEED DOCUMENT SECURITY INDUSTRY GUIDELINES

December 23, 2024	2.10 CARATS
CU Report No. LG570029936	D
CU CORNERED RECT. MODIFIED BRILLIANT	VS 2
	67.5%
	65%
	Medium
0.06 X 0.24 X 0.21 MM	
Carat Weight	
Color Grade	
Clarity Grade	
Depth	
Table	
Gable	
Culet	
Polish	
Symmetry	
Fluorescence	
Inscriptions(s)	
	1691 LG570029936

Comments:

The Laboratory Grown Diamond was analyzed by Laser Micro Raman Spectroscopy (LMRS) and found to be a type IIa growth process.