



**ELECTRONIC COPY**

LG670429048  
Report verification at igi.org



December 20, 2024  
IGI Report Number **LG670429048**  
Description **LABORATORY GROWN DIAMOND**  
Shape and Cutting Style **SQUARE CUSHION MODIFIED BRILLIANT**  
Measurements **6.44 X 6.29 X 4.21 MM**  
**GRADING RESULTS**  
Carat Weight **1.59 CARAT**  
Color Grade **FANCY VIVID YELLOW**  
Clarity Grade **VVS 2**

December 20, 2024  
IGI Report Number **LG670429048**  
Description **LABORATORY GROWN DIAMOND**  
Shape and Cutting Style **SQUARE CUSHION MODIFIED BRILLIANT**  
Measurements **6.44 X 6.29 X 4.21 MM**

**GRADING RESULTS**

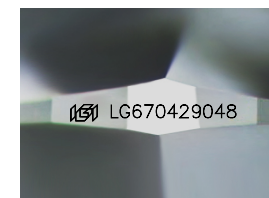
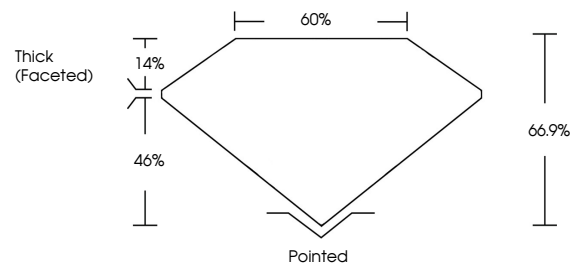
Carat Weight **1.59 CARAT**  
Color Grade **FANCY VIVID YELLOW**  
Clarity Grade **VVS 2**

**ADDITIONAL GRADING INFORMATION**

Polish **EXCELLENT**  
Symmetry **EXCELLENT**  
Fluorescence **NONE**  
Inscription(s) **IGI LG670429048**

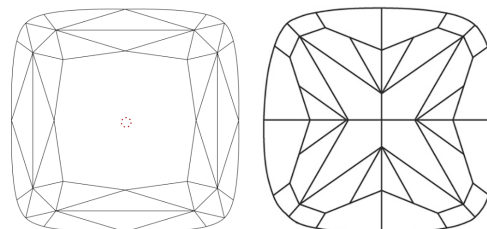
Comments: This Laboratory Grown Diamond was created by Chemical Vapor Deposition (CVD) growth process.

**PROPORTIONS**



Sample Image Used

**CLARITY CHARACTERISTICS**



**KEY TO SYMBOLS**

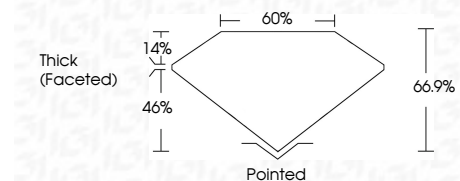
Red symbols indicate internal characteristics.  
Green symbols indicate external characteristics.

**COLOR**

D E F G H I J Faint Very Light Light

**CLARITY**

IF	VS <sup>1-2</sup>	VS <sup>1-2</sup>	SI <sup>1-2</sup>	I <sup>1-3</sup>
Internally Flawless	Very Very Slightly Included	Very Slightly Included	Slightly Included	Included



**ADDITIONAL GRADING INFORMATION**

Polish **EXCELLENT**  
Symmetry **EXCELLENT**  
Fluorescence **NONE**  
Inscription(s) **IGI LG670429048**  
Comments: This Laboratory Grown Diamond was created by Chemical Vapor Deposition (CVD) growth process.



**IGI**



December 20, 2024  
IGI Report No **LG670429048**  
**SQUARE CUSHION MODIFIED BRILLIANT**  
**6.44 X 6.29 X 4.21 MM**  
Carat Weight **1.59 CARAT**  
Color Grade **FANCY VIVID YELLOW**  
Clarity Grade **VVS 2**  
Depth **66.9%**  
Table **60%**  
Girdle **Thick (Faceted)**  
Culet **Pointed**  
Polish **EXCELLENT**  
Symmetry **EXCELLENT**  
Fluorescence **NONE**  
Inscription(s) **IGI LG670429048**  
Comments: This Laboratory Grown Diamond was created by Chemical Vapor Deposition (CVD) growth process.