



# INTERNATIONAL GEMOLOGICAL INSTITUTE

## LABORATORY GROWN DIAMOND REPORT

December 18, 2024

IGI Report Number

LG670426465

Description

LABORATORY GROWN DIAMOND

Shape and Cutting Style

EMERALD CUT

Measurements

6.75 X 4.56 X 3.09 MM

### GRADING RESULTS

Carat Weight

0.95 CARAT

Color Grade

D

Clarity Grade

INTERNALLY FLAWLESS

### ADDITIONAL GRADING INFORMATION

Polish

EXCELLENT

Symmetry

VERY GOOD

Fluorescence

NONE

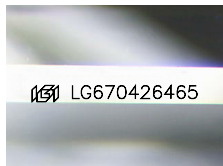
Inscription(s)

IGI LG670426465

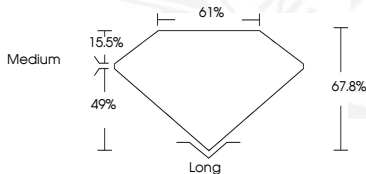
Comments: This Laboratory Grown Diamond was created by Chemical Vapor Deposition (CVD) growth process. Type IIa

ELECTRONIC COPY

LG670426465



Sample Image Used



December 18, 2024

IGI Report Number LG670426465

EMERALD CUT

LABORATORY GROWN DIAMOND

6.75 X 4.56 X 3.09 MM

Carat Weight 0.95 CARAT

Color Grade D

Clarity Grade I.F.

Polish EXCELLENT

Symmetry VERY GOOD

Fluorescence NONE

Inscription(s) IGI LG670426465

Comments: This Laboratory Grown Diamond was created by Chemical Vapor Deposition (CVD) growth process. Type IIa



December 18, 2024

IGI Report Number LG670426465

EMERALD CUT

LABORATORY GROWN DIAMOND

6.75 X 4.56 X 3.09 MM

Carat Weight 0.95 CARAT

Color Grade D

Clarity Grade I.F.

Polish EXCELLENT

Symmetry VERY GOOD

Fluorescence NONE

Inscription(s) IGI LG670426465

Comments: This Laboratory Grown Diamond was created by Chemical Vapor Deposition (CVD) growth process. Type IIa



THIS DOCUMENT WAS PRODUCED WITH THE FOLLOWING SECURITY MEASURES: SPECIAL DOCUMENT PAPER, INK SCREENS, WATERMARK, BACKGROUND DESIGNS, HOLOGRAM AND OTHER SECURITY FEATURES NOT LISTED AND DO EXCEED DOCUMENT SECURITY INDUSTRY GUIDELINES.

For terms & conditions and to verify this report, please visit [www.igi.org](http://www.igi.org)