



ELECTRONIC COPY

LABORATORY GROWN DIAMOND REPORT

December 20, 2024  
IGI Report Number **LG670424544**  
Description **LABORATORY GROWN DIAMOND**  
Shape and Cutting Style **CUSHION MODIFIED BRILLIANT**  
Measurements **8.17 X 6.51 X 4.34 MM**

GRADING RESULTS

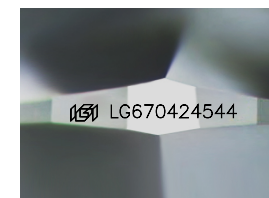
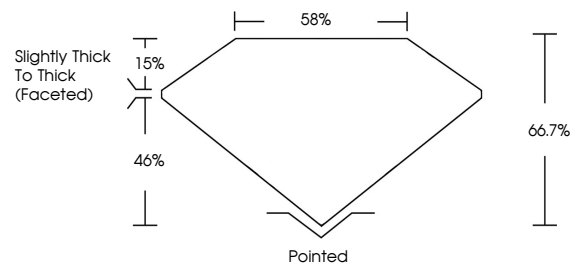
Carat Weight **2.10 CARATS**  
Color Grade **FANCY VIVID YELLOW**  
Clarity Grade **VVS 2**

ADDITIONAL GRADING INFORMATION

Polish **EXCELLENT**  
Symmetry **EXCELLENT**  
Fluorescence **NONE**  
Inscription(s) **IGI LG670424544**

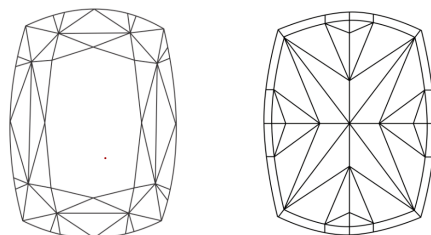
Comments: This Laboratory Grown Diamond was created by Chemical Vapor Deposition (CVD) growth process.

PROPORTIONS



Sample Image Used

CLARITY CHARACTERISTICS



KEY TO SYMBOLS

Red symbols indicate internal characteristics.  
Green symbols indicate external characteristics.

COLOR

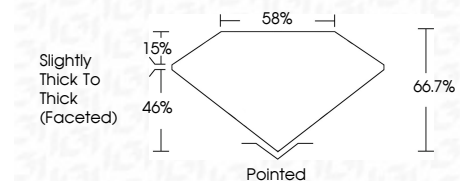
D E F G H I J Faint Very Light Light

CLARITY

IF VVS<sup>1-2</sup> VS<sup>1-2</sup> SI<sup>1-2</sup> I<sup>1-3</sup>  
Internally Flawless Very Very Slightly Included Very Slightly Included Slightly Included Included



December 20, 2024  
IGI Report Number **LG670424544**  
Description **LABORATORY GROWN DIAMOND**  
Shape and Cutting Style **CUSHION MODIFIED BRILLIANT**  
Measurements **8.17 X 6.51 X 4.34 MM**  
GRADING RESULTS  
Carat Weight **2.10 CARATS**  
Color Grade **FANCY VIVID YELLOW**  
Clarity Grade **VVS 2**



ADDITIONAL GRADING INFORMATION

Polish **EXCELLENT**  
Symmetry **EXCELLENT**  
Fluorescence **NONE**  
Inscription(s) **IGI LG670424544**  
Comments: This Laboratory Grown Diamond was created by Chemical Vapor Deposition (CVD) growth process.



December 20, 2024  
IGI Report No **LG670424544**  
**CUSHION MODIFIED BRILLIANT**  
**8.17 X 6.51 X 4.34 MM**  
Carat Weight **2.10 CARATS**  
Color Grade **FANCY VIVID YELLOW**  
Clarity Grade **VVS 2**  
Depth **66.7%**  
Table **58%**  
Girdle **Slightly Thick To Thick (Faceted)**  
Culet **Pointed**  
Polish **EXCELLENT**  
Symmetry **EXCELLENT**  
Fluorescence **NONE**  
Inscription(s) **IGI LG670424544**  
Comments: This Laboratory Grown Diamond was created by Chemical Vapor Deposition (CVD) growth process.