



INTERNATIONAL GEMOLOGICAL INSTITUTE

ELECTRONIC COPY

LG670419440

LABORATORY GROWN DIAMOND REPORT

December 30, 2024
IGI Report Number **LG670419440**
Description **LABORATORY GROWN DIAMOND**
Shape and Cutting Style **PRINCESS CUT**
Measurements **3.73 X 3.61 X 2.63 MM**

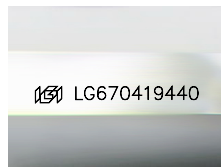
GRADING RESULTS

Carat Weight **0.32 CARAT**
Color Grade **E**
Clarity Grade **VS 2**

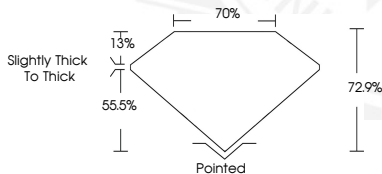
ADDITIONAL GRADING INFORMATION

Polish **EXCELLENT**
Symmetry **VERY GOOD**
Fluorescence **NONE**
Inscription(s) **IGI LG670419440**

Comments: As Grown - No indication of post-growth treatment.
This Laboratory Grown Diamond was created by High Pressure High Temperature (HPHT) growth process.
Type II



Sample Image Used



December 30, 2024

IGI Report Number **LG670419440**
PRINCESS CUT
LABORATORY GROWN DIAMOND
3.73 X 3.61 X 2.63 MM
Carat Weight **0.32 CARAT**
Color Grade **E**
Clarity Grade **VS 2**
Polish **EXCELLENT**
Symmetry **VERY GOOD**
Fluorescence **NONE**
Inscription(s) **IGI LG670419440**

Comments: As Grown - No indication of post-growth treatment. This Laboratory Grown Diamond was created by High Pressure High Temperature (HPHT) growth process. Type II



December 30, 2024

IGI Report Number **LG670419440**
PRINCESS CUT
LABORATORY GROWN DIAMOND
3.73 X 3.61 X 2.63 MM
Carat Weight **0.32 CARAT**
Color Grade **E**
Clarity Grade **VS 2**
Polish **EXCELLENT**
Symmetry **VERY GOOD**
Fluorescence **NONE**
Inscription(s) **IGI LG670419440**

Comments: As Grown - No indication of post-growth treatment. This Laboratory Grown Diamond was created by High Pressure High Temperature (HPHT) growth process. Type II



THIS DOCUMENT WAS PRODUCED WITH THE FOLLOWING SECURITY MEASURES: SPECIAL DOCUMENT PAPER, INK SCREENS, WATERMARK, BACKGROUND DESIGNS, HOLOGRAM AND OTHER SECURITY FEATURES NOT LISTED AND DO EXCEED DOCUMENT SECURITY INDUSTRY GUIDELINES.

For terms & conditions and to verify this report, please visit www.igi.org