



INTERNATIONAL GEMOLOGICAL INSTITUTE

LABORATORY GROWN DIAMOND REPORT

December 17, 2024

IGI Report Number

LG670413566

Description

LABORATORY GROWN DIAMOND

Shape and Cutting Style

ROUND BRILLIANT

Measurements

5.84 - 5.88 X 3.41 MM

GRADING RESULTS

Carat Weight

0.71 CARAT

Color Grade

E

Clarity Grade

VVS 2

Cut Grade

EXCELLENT

ADDITIONAL GRADING INFORMATION

Polish

VERY GOOD

Symmetry

EXCELLENT

Fluorescence

NONE

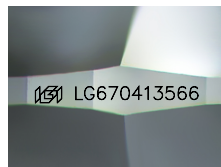
Inscription(s)

IGI LG670413566

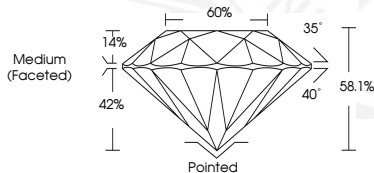
Comments: This Laboratory Grown Diamond was created by Chemical Vapor Deposition (CVD) growth process.
Type IIa

ELECTRONIC COPY

LG670413566



Sample Image Used



December 17, 2024

IGI Report Number LG670413566

ROUND BRILLIANT

LABORATORY GROWN DIAMOND

5.84 - 5.88 X 3.41 MM

Carat Weight 0.71 CARAT

Color Grade E

Clarity Grade VVS 2

Cut Grade EXCELLENT

Polish VERY GOOD

Symmetry EXCELLENT

Fluorescence NONE

Inscription(s) IGI LG670413566

Comments: This Laboratory Grown Diamond was created by Chemical Vapor Deposition (CVD) growth process. Type IIa



December 17, 2024

IGI Report Number LG670413566

ROUND BRILLIANT

LABORATORY GROWN DIAMOND

5.84 - 5.88 X 3.41 MM

Carat Weight 0.71 CARAT

Color Grade E

Clarity Grade VVS 2

Cut Grade EXCELLENT

Polish VERY GOOD

Symmetry EXCELLENT

Fluorescence NONE

Inscription(s) IGI LG670413566

Comments: This Laboratory Grown Diamond was created by Chemical Vapor Deposition (CVD) growth process. Type IIa



THIS DOCUMENT WAS PRODUCED WITH THE FOLLOWING SECURITY MEASURES: SPECIAL DOCUMENT PAPER, INK SCREENS, WATERMARK, BACKGROUND DESIGNS, HOLOGRAM AND OTHER SECURITY FEATURES NOT LISTED AND DO EXCEED DOCUMENT SECURITY INDUSTRY GUIDELINES.

For terms & conditions and to verify this report, please visit www.igi.org