



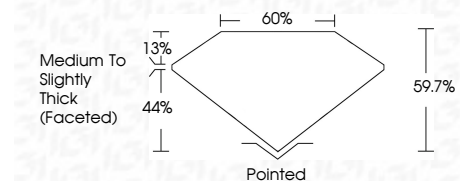
**ELECTRONIC COPY**

LG670412009  
Report verification at igi.org



December 18, 2024  
IGI Report Number **LG670412009**  
Description **LABORATORY GROWN DIAMOND**  
Shape and Cutting Style **PEAR BRILLIANT**  
Measurements **11.72 X 7.15 X 4.27 MM**

**GRADING RESULTS**  
Carat Weight **2.01 CARATS**  
Color Grade **G**  
Clarity Grade **VS 1**

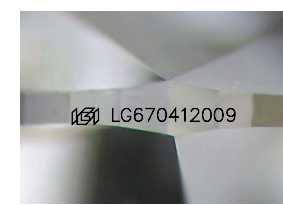
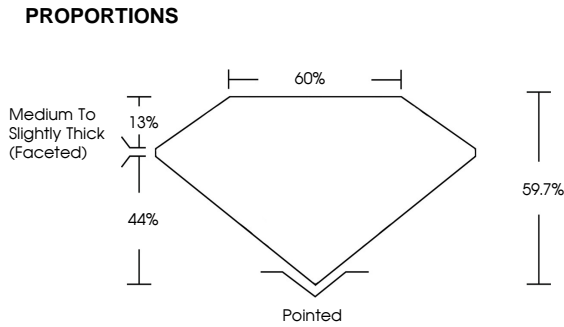


**ADDITIONAL GRADING INFORMATION**  
Polish **EXCELLENT**  
Symmetry **EXCELLENT**  
Fluorescence **NONE**  
Inscription(s) **IGI LG670412009**  
Comments: This Laboratory Grown Diamond was created by Chemical Vapor Deposition (CVD) growth process. Type IIa



December 18, 2024  
IGI Report No. **LG670412009**  
**PEAR BRILLIANT**  
11.72 X 7.15 X 4.27 MM  
2.01 CARATS  
Color Grade **G**  
Clarity Grade **VS 1**  
Table **60%**  
Depth **44%**  
Girdle **Medium to Slightly Thick (Faceted)**  
Culet **Pointed**  
Polish **EXCELLENT**  
Symmetry **EXCELLENT**  
Fluorescence **NONE**  
Inscription(s) **IGI LG670412009**  
Comments: This Laboratory Grown Diamond was created by Chemical Vapor Deposition (CVD) growth process. Type IIa

December 18, 2024  
IGI Report Number **LG670412009**  
Description **LABORATORY GROWN DIAMOND**  
Shape and Cutting Style **PEAR BRILLIANT**  
Measurements **11.72 X 7.15 X 4.27 MM**  
**GRADING RESULTS**  
Carat Weight **2.01 CARATS**  
Color Grade **G**  
Clarity Grade **VS 1**  
**ADDITIONAL GRADING INFORMATION**  
Polish **EXCELLENT**  
Symmetry **EXCELLENT**  
Fluorescence **NONE**  
Inscription(s) **IGI LG670412009**  
Comments: This Laboratory Grown Diamond was created by Chemical Vapor Deposition (CVD) growth process. Type IIa



Sample Image Used

**COLOR**

D	E	F	G	H	I	J	Faint	Very Light	Light
---	---	---	---	---	---	---	-------	------------	-------

**CLARITY**

IF	VS <sup>1-2</sup>	VS <sup>1-2</sup>	SI <sup>1-2</sup>	I <sup>1-3</sup>
Internally Flawless	Very Very Slightly Included	Very Slightly Included	Slightly Included	Included

