



# INTERNATIONAL GEMOLOGICAL INSTITUTE

## LABORATORY GROWN DIAMOND REPORT

December 20, 2024

IGI Report Number

LG670411905

Description

LABORATORY GROWN DIAMOND

Shape and Cutting Style

ROUND BRILLIANT

Measurements

4.64 - 4.70 X 2.79 MM

### GRADING RESULTS

Carat Weight

0.37 CARAT

Color Grade

D

Clarity Grade

VS 2

Cut Grade

EXCELLENT

### ADDITIONAL GRADING INFORMATION

Polish

EXCELLENT

Symmetry

EXCELLENT

Fluorescence

NONE

Inscription(s)

IGI LG670411905

Comments: HEARTS & ARROWS

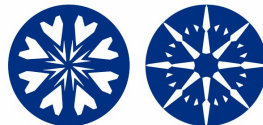
This Laboratory Grown Diamond was created by Chemical Vapor

Deposition (CVD) growth process.

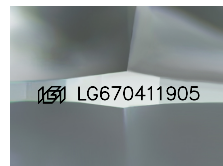
Type IIa

ELECTRONIC COPY

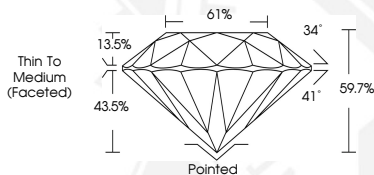
LG670411905



HEARTS & ARROWS



Sample Image Used



December 20, 2024

IGI Report Number LG670411905

ROUND BRILLIANT

LABORATORY GROWN DIAMOND

4.64 - 4.70 X 2.79 MM

Carat Weight 0.37 CARAT

Color Grade D

Clarity Grade VS 2

Cut Grade EXCELLENT

Polish EXCELLENT

Symmetry EXCELLENT

Fluorescence NONE

Inscription(s) IGI LG670411905

Comments: HEARTS & ARROWS This

Laboratory Grown Diamond was

created by Chemical Vapor

Deposition (CVD) growth process.

Type IIa



December 20, 2024

IGI Report Number LG670411905

ROUND BRILLIANT

LABORATORY GROWN DIAMOND

4.64 - 4.70 X 2.79 MM

Carat Weight 0.37 CARAT

Color Grade D

Clarity Grade VS 2

Cut Grade EXCELLENT

Polish EXCELLENT

Symmetry EXCELLENT

Fluorescence NONE

Inscription(s) IGI LG670411905

Comments: HEARTS & ARROWS This

Laboratory Grown Diamond was

created by Chemical Vapor

Deposition (CVD) growth process.

Type IIa



THIS DOCUMENT WAS PRODUCED WITH THE FOLLOWING SECURITY MEASURES: SPECIAL DOCUMENT PAPER, INK SCREENS, WATERMARK, BACKGROUND DESIGNS, HOLOGRAM AND OTHER SECURITY FEATURES NOT LISTED AND DO EXCEED DOCUMENT SECURITY INDUSTRY GUIDELINES.

For terms & conditions and to verify this report, please visit [www.igi.org](http://www.igi.org)