




**ELECTRONIC COPY**

## LABORATORY GROWN DIAMOND REPORT

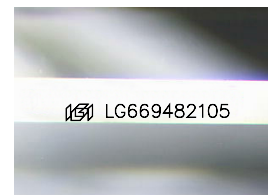
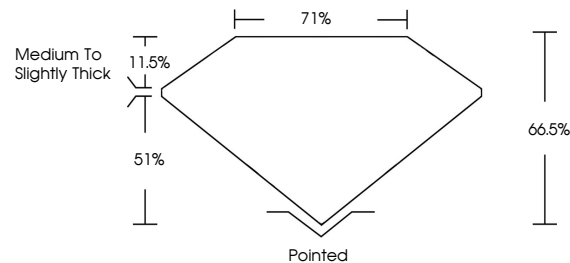
LG669482105  
Report verification at [igi.org](https://igi.org)

December 17, 2024	
IGI Report Number	LG669482105
Description	LABORATORY GROWN DIAMOND
Shape and Cutting Style	PRINCESS CUT
Measurements	6.51 X 6.39 X 4.25 MM
GRADING RESULTS	
Carat Weight	1.54 CARAT
Color Grade	F
Clarity Grade	VS 1

### ADDITIONAL GRADING INFORMATION

Polish	EXCELLENT
Symmetry	EXCELLENT
Fluorescence	NONE
Inscription(s)	 LG669482105
Comments: This Laboratory Grown Diamond was created by Chemical Vapor Deposition (CVD) growth process.	
Type IIa	

## PROPORTIONS



Sample Image Used

## COLOR

D E F G H I J Faint Very Light Light

## CLARITY

IF	VS <sup>1-2</sup>	VS <sup>1-2</sup>	SI <sup>1-2</sup>	I <sup>1-3</sup>
Internally Flawless	Very Very Slightly Included	Very Slightly Included	Slightly Included	Included

## LABORATORY GROWN DIAMOND REPORT



December 17, 2024	
IGI Report Number	LG669482105
Description	LABORATORY GROWN DIAMOND
Shape and Cutting Style	PRINCESS CUT
Measurements	6.51 X 6.39 X 4.25 MM
GRADING RESULTS	
Carat Weight	1.54 CARAT
Color Grade	F
Clarity Grade	VS 1

### ADDITIONAL GRADING INFORMATION

Polish	EXCELLENT
Symmetry	EXCELLENT
Fluorescence	NONE
Inscription(s)	 LG669482105
Comments: This Laboratory Grown Diamond was created by Chemical Vapor Deposition (CVD) growth process.	
Type IIa	



© IGI 2020, International Gemological Institute

FD - 10 20



THIS DOCUMENT WAS PRODUCED WITH THE FOLLOWING SECURITY MEASURES: SPECIAL DOCUMENT PAPER, INK SCREENS, WATERMARK, BACKGROUND DESIGNS, HOLOGRAM AND OTHER SECURITY FEATURES NOT LISTED AND DO EXCEED DOCUMENT SECURITY INDUSTRY GUIDELINES

**www.igi.org**

December 17, 2024  
 IGI Report No LG669482105  
 PRINCESS CUT

5.51 X 6.39 X 4.25 MM	Carat Weight	1.54 CARAT
	Color Grade	F
	Clarity Grade	VS 1
	Depth	66.6%
	Table	71%
	Girdle	Medium To Slightly Thick
	Culet	Pointed
	Polish	EXCELLENT
	Symmetry	EXCELLENT
	Fluorescence	NONE
	Comments (s)	see 1C549492705

**Comments:**  
This Laboratory Grown Diamond was created by Chemical Vapor Deposition (CVD) growth process.