



# INTERNATIONAL GEMOLOGICAL INSTITUTE

ELECTRONIC COPY

LG669475079



December 26, 2024

IGI Report Number LG669475079

PRINCESS CUT

LABORATORY GROWN DIAMOND

5.35 X 5.24 X 3.81 MM

Carat Weight 0.91 CARAT

Color Grade FANCY VIVID PINK

Clarity Grade VS 2

Polish GOOD

Symmetry VERY GOOD

Fluorescence SLIGHT

Inscription(s) IGI LG669475079

Comments: This Laboratory Grown Diamond was created by Chemical Vapor Deposition (CVD) growth process. Indications of post-growth treatment.

## LABORATORY GROWN DIAMOND REPORT

December 26, 2024

IGI Report Number

LG669475079

Description

LABORATORY GROWN DIAMOND

Shape and Cutting Style

PRINCESS CUT

Measurements

5.35 X 5.24 X 3.81 MM

### GRADING RESULTS

Carat Weight

0.91 CARAT

Color Grade

FANCY VIVID PINK

Clarity Grade

VS 2

### ADDITIONAL GRADING INFORMATION

Polish

GOOD

Symmetry

VERY GOOD

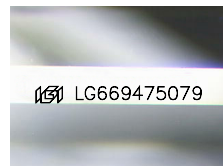
Fluorescence

SLIGHT

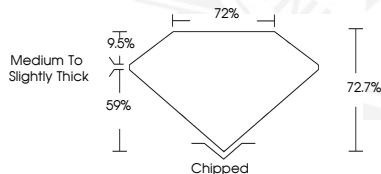
Inscription(s)

IGI LG669475079

Comments: This Laboratory Grown Diamond was created by Chemical Vapor Deposition (CVD) growth process. Indications of post-growth treatment.



Sample Image Used



December 26, 2024

IGI Report Number LG669475079

PRINCESS CUT

LABORATORY GROWN DIAMOND

5.35 X 5.24 X 3.81 MM

Carat Weight 0.91 CARAT

Color Grade FANCY VIVID PINK

Clarity Grade VS 2

Polish GOOD

Symmetry VERY GOOD

Fluorescence SLIGHT

Inscription(s) IGI LG669475079

Comments: This Laboratory Grown Diamond was created by Chemical Vapor Deposition (CVD) growth process. Indications of post-growth treatment.



THIS DOCUMENT WAS PRODUCED WITH THE FOLLOWING SECURITY MEASURES: SPECIAL DOCUMENT PAPER, PINK SCREENS, WATERMARK BACKGROUND DESIGN, HOLOGRAM AND OTHER SECURITY FEATURES NOT LISTED AND DO EXCEED DOCUMENT SECURITY INDUSTRY GUIDELINES.

For terms & conditions and to verify this report, please visit [www.igi.org](http://www.igi.org)