

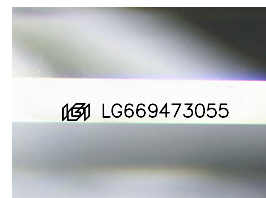
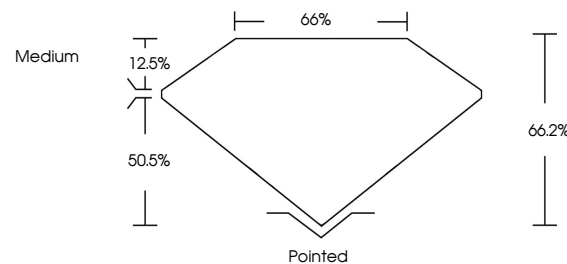


ELECTRONIC COPY

LABORATORY GROWN DIAMOND REPORT

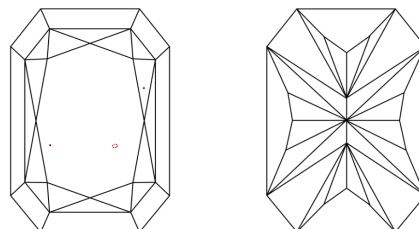
LG669473055
Report verification at lqi.org

PROPORTIONS



Sample Image Used

CLARITY CHARACTERISTICS



KEY TO SYMBOLS

Red symbols indicate internal characteristics.
Green symbols indicate external characteristics.

COLOR

D E F G H I J Faint Very Light Light

CLARITY

IF	VS ¹⁻²	VS ¹⁻²	SI ¹⁻²	I ¹⁻³
Internally Flawless	Very Very Slightly Included	Very Slightly Included	Slightly Included	Included

LABORATORY GROWN DIAMOND REPORT



December 16, 2024

IGI Report Number **LG669473055**

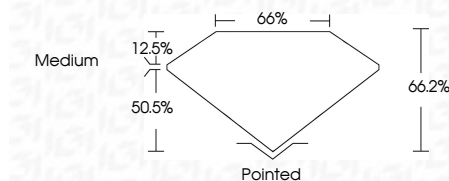
Description **LABORATORY GROWN DIAMOND**

Shape and Cutting Style

Measurements **8.08 X 5.89 X 3.90 MM**

GRADING RESULTS

Carat Weight **1.57 CARAT**

Color Grade EClarity Grade VVS 2

ADDITIONAL GRADING INFORMATION

Polish **EXCELLENT**Symmetry **EXCELLENT**Fluorescence **NONE**Inscription(s) LG669473055

Comments: This Laboratory Grown Diamond was created by Chemical Vapor Deposition (CVD) growth process.
Type IIa



© IGI 2020, International Gemological Institute

FD - 10 20

www.igi.org

THIS DOCUMENT WAS PRODUCED WITH THE FOLLOWING SECURITY MEASURES: SPECIAL DOCUMENT PAPER, INK SCREENS, WATERMARK, BACKGROUND DESIGNS, HOLOGRAM AND OTHER SECURITY FEATURES NOT LISTED AND DO EXCEED DOCUMENT SECURITY INDUSTRY GUIDELINE

December 16, 2024	CU Report No. LG56973955	CU COVERED RECT. MODIFIED BRILLIANT
1.08 X 0.89 X 3.90 MM	Carat Weight	1.57 CARAT
	Color Grade	E
	Clarity Grade	VS 2
	Depth	64.2%
	Table	66%
	Gable	Medium
	Culet	Pointed
	Polish	EXCELLENT
	Symmetry	EXCELLENT
	Fluorescence	NONE
	Inscriptions(s)	881 LG56973955

Comments: Laboratory Grown Diamond was created by Chemical Vapor Deposition (CVD) growth process.

Type IIa