



**ELECTRONIC COPY**

LG669471487  
Report verification at igi.org



December 23, 2024

IGI Report Number **LG669471487**

Description **LABORATORY GROWN DIAMOND**

Shape and Cutting Style **ROUND BRILLIANT**

Measurements **8.40 - 8.47 X 5.17 MM**

**GRADING RESULTS**

Carat Weight **2.26 CARATS**

Color Grade **E**

Clarity Grade **VS 1**

Cut Grade **IDEAL**

December 23, 2024  
IGI Report Number **LG669471487**  
Description **LABORATORY GROWN DIAMOND**  
Shape and Cutting Style **ROUND BRILLIANT**  
Measurements **8.40 - 8.47 X 5.17 MM**

**GRADING RESULTS**

Carat Weight **2.26 CARATS**

Color Grade **E**

Clarity Grade **VS 1**

Cut Grade **IDEAL**

**ADDITIONAL GRADING INFORMATION**

Polish **EXCELLENT**

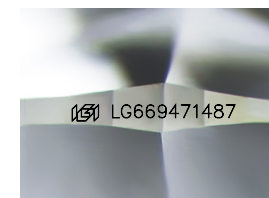
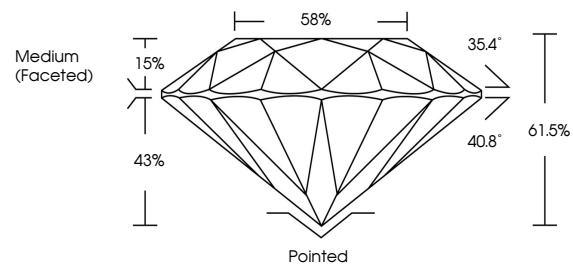
Symmetry **EXCELLENT**

Fluorescence **NONE**

Inscription(s) **LG669471487**

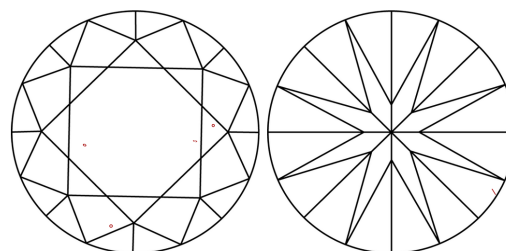
Comments: HEARTS & ARROWS  
This Laboratory Grown Diamond was created by  
Chemical Vapor Deposition (CVD) growth process.  
Type IIa

**PROPORTIONS**



Sample Image Used

**CLARITY CHARACTERISTICS**



**KEY TO SYMBOLS**

Red symbols indicate internal characteristics.  
Green symbols indicate external characteristics.



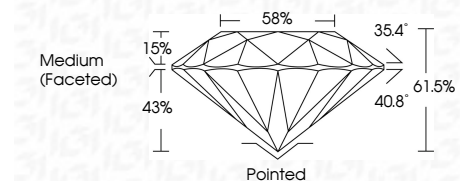
**COLOR**

D E F G H I J Faint Very Light Light

**CLARITY**

IF VS<sup>1-2</sup> VS<sup>1-2</sup> SI<sup>1-2</sup> I<sup>1-3</sup>

Internally Flawless Very Very Slightly Included Very Slightly Included Slightly Included Included



**ADDITIONAL GRADING INFORMATION**

Polish **EXCELLENT**

Symmetry **EXCELLENT**

Fluorescence **NONE**

Inscription(s) **LG669471487**

Comments: HEARTS & ARROWS  
This Laboratory Grown Diamond was created by  
Chemical Vapor Deposition (CVD) growth process.  
Type IIa



December 23, 2024  
IGI Report No **LG669471487**  
**ROUND BRILLIANT**

**2.26 CARATS**  
E

**8.40 - 8.47 X 5.17 MM**

Carat Weight  
Color Grade  
Clarity Grade  
Depth  
Table  
Girdle  
Medium (Faceted)

**VS 1**  
**IDEAL**  
61.5%  
58%

Culet  
Polish  
Symmetry  
Fluorescence  
Inscriptions(s)

**Pointed**  
**EXCELLENT**  
**EXCELLENT**  
**NONE**  
**NONE**  
IGI LG669471487

Comments:  
Hearts & Arrows  
This Laboratory Grown Diamond was  
created by Chemical Vapor Deposition  
(CVD) growth process.  
Type IIa