



INTERNATIONAL GEMOLOGICAL INSTITUTE

ELECTRONIC COPY

LG669469014

LABORATORY GROWN DIAMOND REPORT

December 24, 2024

IGI Report Number

LG669469014

Description

LABORATORY GROWN DIAMOND

Shape and Cutting Style

ROUND BRILLIANT

Measurements

5.76 - 5.77 X 3.41 MM

GRADING RESULTS

Carat Weight

0.69 CARAT

Color Grade

FANCY PINK

Clarity Grade

VS 1

Cut Grade

IDEAL

ADDITIONAL GRADING INFORMATION

Polish

EXCELLENT

Symmetry

EXCELLENT

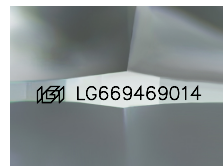
Fluorescence

SLIGHT

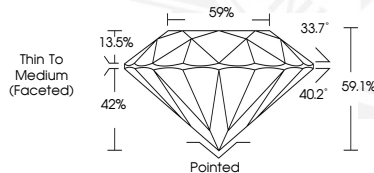
Inscription(s)

IGI LG669469014

Comments: This Laboratory Grown Diamond was created by High Pressure High Temperature (HPHT) growth process. Indications of post-growth treatment.



Sample Image Used



December 24, 2024

IGI Report Number LG669469014

ROUND BRILLIANT

LABORATORY GROWN DIAMOND

5.76 - 5.77 X 3.41 MM

Carat Weight 0.69 CARAT

Color Grade FANCY PINK

Clarity Grade VS 1

Cut Grade IDEAL

Polish EXCELLENT

Symmetry EXCELLENT

Fluorescence SLIGHT

Inscription(s) IGI LG669469014

Comments: This Laboratory Grown Diamond was created by High Pressure High Temperature (HPHT) growth process. Indications of post-growth treatment.



December 24, 2024

IGI Report Number LG669469014

ROUND BRILLIANT

LABORATORY GROWN DIAMOND

5.76 - 5.77 X 3.41 MM

Carat Weight 0.69 CARAT

Color Grade FANCY PINK

Clarity Grade VS 1

Cut Grade IDEAL

Polish EXCELLENT

Symmetry EXCELLENT

Fluorescence SLIGHT

Inscription(s) IGI LG669469014

Comments: This Laboratory Grown Diamond was created by High Pressure High Temperature (HPHT) growth process. Indications of post-growth treatment.



THIS DOCUMENT WAS PRODUCED WITH THE FOLLOWING SECURITY MEASURES: SPECIAL DOCUMENT PAPER, PINK SCREENS, WATERMARK, BACKGROUND DESIGNS, HOLOGRAM AND OTHER SECURITY FEATURES NOT LISTED AND DO EXCEED DOCUMENT SECURITY INDUSTRY GUIDELINES.

For terms & conditions and to verify this report, please visit www.igi.org