



# INTERNATIONAL GEMOLOGICAL INSTITUTE

ELECTRONIC COPY

LG669466959



December 20, 2024

IGI Report Number **LG669466959**  
ROUND BRILLIANT  
LABORATORY GROWN DIAMOND  
5.34 - 5.35 X 3.28 MM

Carat Weight **0.58 CARAT**  
Color Grade **D**  
Clarity Grade **VVS 1**  
Cut Grade **IDEAL**  
Polish **EXCELLENT**  
Symmetry **EXCELLENT**  
Fluorescence **NONE**  
Inscription(s) **(IGI) LG669466959**

Comments: HEARTS & ARROWS As Grown - No indication of post-growth treatment. This Laboratory Grown Diamond was created by High Pressure High Temperature (HPHT) growth process. Type II

## LABORATORY GROWN DIAMOND REPORT

December 20, 2024

IGI Report Number

LG669466959

Description

LABORATORY GROWN DIAMOND

Shape and Cutting Style

ROUND BRILLIANT

Measurements

5.34 - 5.35 X 3.28 MM

### GRADING RESULTS

Carat Weight

0.58 CARAT

Color Grade

D

Clarity Grade

VVS 1

Cut Grade

IDEAL

### ADDITIONAL GRADING INFORMATION

Polish

EXCELLENT

Symmetry

EXCELLENT

Fluorescence

NONE

Inscription(s)

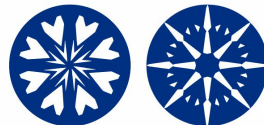
(IGI) LG669466959

Comments: HEARTS & ARROWS

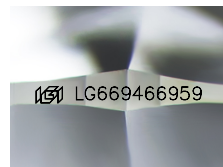
As Grown - No indication of post-growth treatment.

This Laboratory Grown Diamond was created by High Pressure High Temperature (HPHT) growth process.

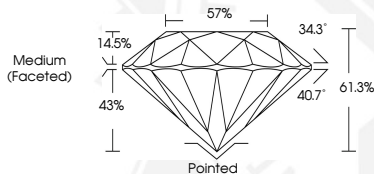
Type II



HEARTS & ARROWS



Sample Image Used



December 20, 2024

IGI Report Number **LG669466959**  
ROUND BRILLIANT  
LABORATORY GROWN DIAMOND  
5.34 - 5.35 X 3.28 MM

Carat Weight **0.58 CARAT**  
Color Grade **D**  
Clarity Grade **VVS 1**  
Cut Grade **IDEAL**  
Polish **EXCELLENT**  
Symmetry **EXCELLENT**  
Fluorescence **NONE**  
Inscription(s) **(IGI) LG669466959**

Comments: HEARTS & ARROWS As Grown - No indication of post-growth treatment. This Laboratory Grown Diamond was created by High Pressure High Temperature (HPHT) growth process. Type II



THIS DOCUMENT WAS PRODUCED WITH THE FOLLOWING SECURITY MEASURES: SPECIAL DOCUMENT PAPER, INK SCREENS, WATERMARK, BACKGROUND DESIGNS, HOLOGRAM AND OTHER SECURITY FEATURES NOT LISTED AND DO EXCEED DOCUMENT SECURITY INDUSTRY GUIDELINES.

For terms & conditions and to verify this report, please visit [www.igi.org](http://www.igi.org)