



ELECTRONIC COPY

LG669458903
Report verification at igi.org



December 17, 2024

IGI Report Number **LG669458903**

Description **LABORATORY GROWN DIAMOND**

Shape and Cutting Style **EMERALD CUT**

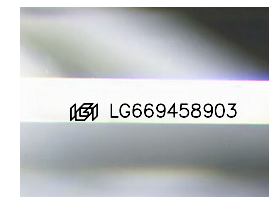
Measurements **8.45 X 6.07 X 4.05 MM**

GRADING RESULTS

Carat Weight **2.03 CARATS**

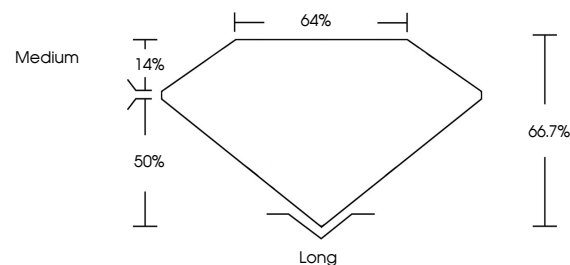
Color Grade **H**

Clarity Grade **VVS 2**

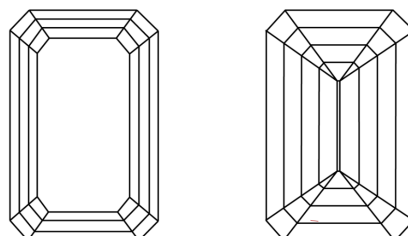


Sample Image Used

PROPORTIONS



CLARITY CHARACTERISTICS



KEY TO SYMBOLS

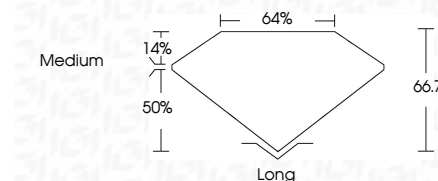
Red symbols indicate internal characteristics.
Green symbols indicate external characteristics.

COLOR

D E F G H I J Faint Very Light Light

CLARITY

IF	VS ¹⁻²	VS ¹⁻²	SI ¹⁻²	I ¹⁻³
Internally Flawless	Very Very Slightly Included	Very Slightly Included	Slightly Included	Included



ADDITIONAL GRADING INFORMATION

Polish **EXCELLENT**

Symmetry **EXCELLENT**

Fluorescence **NONE**

Inscription(s) **IGI LG669458903**

Comments: This Laboratory Grown Diamond was created by Chemical Vapor Deposition (CVD) growth process.
Type IIa



December 17, 2024
IGI Report No. LG669458903
EMERALD CUT
8.45 X 6.07 X 4.05 MM
2.03 CARATS
H
VVS 2
66.7%
64%
Medium
Long
EXCELLENT
EXCELLENT
NONE
IGI LG669458903

Comments: This Laboratory Grown Diamond was created by Chemical Vapor Deposition (CVD) growth process.
Type IIa