



ELECTRONIC COPY

LG669454656 Report verification at igi.org



December 30, 2024 IGI Report Number LG669454656 Description LABORATORY GROWN DIAMOND Shape and Cutting Style CUT CORNERED RECTANGULAR MODIFIED BRILLIANT Measurements 12.81 X 8.23 X 5.76 MM GRADING RESULTS Carat Weight 5.51 CARATS Color Grade G Clarity Grade VS 1

December 30, 2024 IGI Report Number LG669454656 Description LABORATORY GROWN DIAMOND Shape and Cutting Style CUT CORNERED RECTANGULAR MODIFIED BRILLIANT Measurements 12.81 X 8.23 X 5.76 MM

GRADING RESULTS

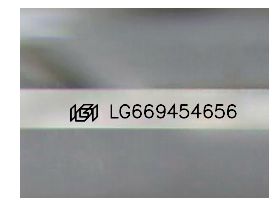
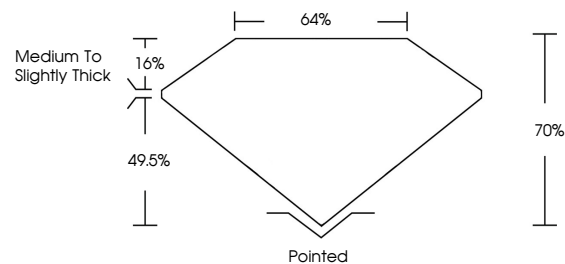
Carat Weight 5.51 CARATS Color Grade G Clarity Grade VS 1

ADDITIONAL GRADING INFORMATION

Polish EXCELLENT Symmetry EXCELLENT Fluorescence NONE Inscription(s) IGI LG669454656

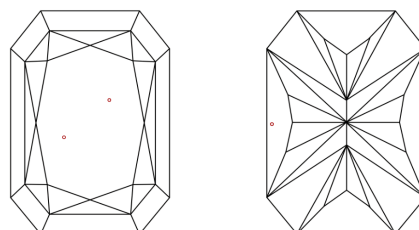
Comments: This Laboratory Grown Diamond was created by Chemical Vapor Deposition (CVD) growth process. Type IIa

PROPORTIONS



Sample Image Used

CLARITY CHARACTERISTICS



KEY TO SYMBOLS

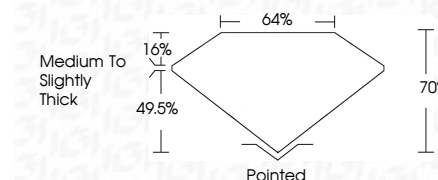
Red symbols indicate internal characteristics. Green symbols indicate external characteristics.

COLOR

D E F G H I J Faint Very Light Light

CLARITY

IF WS 1-2 VS 1-2 SI 1-2 I 1-3 Internally Flawless Very Very Slightly Included Very Slightly Included Slightly Included Included



ADDITIONAL GRADING INFORMATION

Polish EXCELLENT Symmetry EXCELLENT Fluorescence NONE Inscription(s) IGI LG669454656 Comments: This Laboratory Grown Diamond was created by Chemical Vapor Deposition (CVD) growth process. Type IIa



December 30, 2024 IGI Report No. LG669454656 CUT CORNERED RECT. MODIFIED BRILLIANT 12.81 X 8.23 X 5.76 MM 5.51 CARATS G VS 1 70% 64% Medium to Slightly Thick Pointed EXCELLENT EXCELLENT NONE NONE IGI LG669454656 Comments: This Laboratory Grown Diamond was created by Chemical Vapor Deposition (CVD) growth process. Type IIa