



**ELECTRONIC COPY**

LG669453566  
Report verification at igi.org



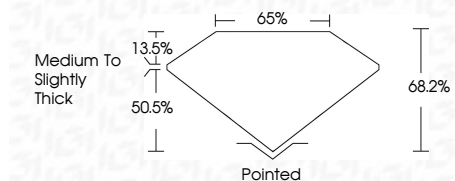
December 18, 2024  
IGI Report Number **LG669453566**

Description **LABORATORY GROWN DIAMOND**  
Shape and Cutting Style **CUT CORNERED  
RECTANGULAR MODIFIED  
BRILLIANT**

Measurements **7.91 X 5.56 X 3.79 MM**

**GRADING RESULTS**

Carat Weight **1.46 CARAT**  
Color Grade **D**  
Clarity Grade **VVS 2**



**ADDITIONAL GRADING INFORMATION**

Polish **EXCELLENT**  
Symmetry **EXCELLENT**  
Fluorescence **NONE**  
Inscription(s) **IGI LG669453566**

Comments: This Laboratory Grown Diamond was created by Chemical Vapor Deposition (CVD) growth process. Type IIa



**IGI**



December 18, 2024  
IGI Report Number **LG669453566**  
Description **LABORATORY GROWN DIAMOND**  
Shape and Cutting Style **CUT CORNERED RECTANGULAR  
MODIFIED BRILLIANT**  
Measurements **7.91 X 5.56 X 3.79 MM**

**GRADING RESULTS**

Carat Weight **1.46 CARAT**  
Color Grade **D**  
Clarity Grade **VVS 2**

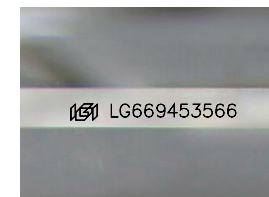
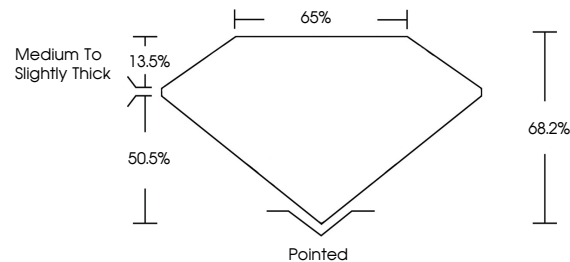
**ADDITIONAL GRADING INFORMATION**

Polish **EXCELLENT**  
Symmetry **EXCELLENT**  
Fluorescence **NONE**

Inscription(s) **IGI LG669453566**

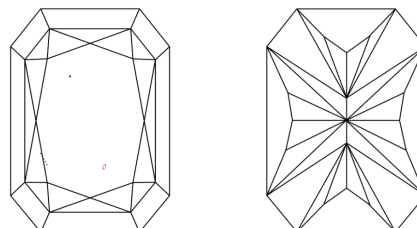
Comments: This Laboratory Grown Diamond was created by Chemical Vapor Deposition (CVD) growth process. Type IIa

**PROPORTIONS**



Sample Image Used

**CLARITY CHARACTERISTICS**



**KEY TO SYMBOLS**

Red symbols indicate internal characteristics.  
Green symbols indicate external characteristics.

**COLOR**

D E F G H I J Faint Very Light Light

**CLARITY**

IF VS<sup>1-2</sup> VS<sup>1-2</sup> SI<sup>1-2</sup> I<sup>1-3</sup>

Internally Flawless Very Very Slightly Included Very Slightly Included Slightly Included Included

December 18, 2024  
IGI Report No. LG669453566  
CUT CORNERED RECT. MODIFIED BRILLIANT  
7.91 X 5.56 X 3.79 MM  
Carat Weight 1.46 CARAT  
Color Grade D  
Clarity Grade VVS 2  
Depth 68.2%  
Table 50.5%  
Girdle Medium to Slightly Thick  
Culet Pointed  
Polish EXCELLENT  
Symmetry EXCELLENT  
Fluorescence NONE  
Inscription(s) IGI LG669453566  
Comments: This Laboratory Grown Diamond was created by Chemical Vapor Deposition (CVD) growth process. Type IIa