



**INTERNATIONAL  
GEMOLOGICAL  
INSTITUTE**

**LABORATORY GROWN DIAMOND REPORT**

February 10, 2025  
 IGI Report Number **LG669450709**  
 Description **LABORATORY GROWN DIAMOND**  
 Shape and Cutting Style **ROUND BRILLIANT**  
 Measurements **5.43 - 5.46 X 3.28 MM**

**GRADING RESULTS**

Carat Weight **0.60 CARAT**  
 Color Grade **FANCY VIVID PINK**  
 Clarity Grade **VS 2**  
 Cut Grade **IDEAL**

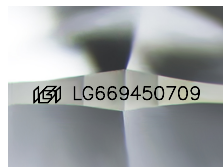
**ADDITIONAL GRADING INFORMATION**

Polish **EXCELLENT**  
 Symmetry **EXCELLENT**  
 Fluorescence **STRONG**  
 Inscription(s) **IGI LG669450709**

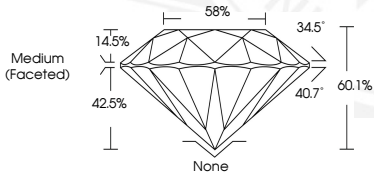
Comments: This Laboratory Grown Diamond was created by  
 Chemical Vapor Deposition (CVD) growth process.  
 Indications of post-growth treatment.

**Electronic COPY**

**LG669450709**



Sample Image Used



February 10, 2025  
 IGI Report Number **LG669450709**  
 ROUND BRILLIANT  
 LABORATORY GROWN DIAMOND  
 5.43 - 5.46 X 3.28 MM  
 Carat Weight **0.60 CARAT**  
 Color Grade **FANCY VIVID PINK**  
 Clarity Grade **VS 2**  
 Cut Grade **IDEAL**  
 Polish **EXCELLENT**  
 Symmetry **EXCELLENT**  
 Fluorescence **STRONG**  
 Inscription(s) **IGI LG669450709**

Comments: This Laboratory Grown  
 Diamond was created by  
 Chemical Vapor Deposition (CVD)  
 growth process. Indications of  
 post-growth treatment.



February 10, 2025  
 IGI Report Number **LG669450709**  
 ROUND BRILLIANT  
 LABORATORY GROWN DIAMOND  
 5.43 - 5.46 X 3.28 MM  
 Carat Weight **0.60 CARAT**  
 Color Grade **FANCY VIVID PINK**  
 Clarity Grade **VS 2**  
 Cut Grade **IDEAL**  
 Polish **EXCELLENT**  
 Symmetry **EXCELLENT**  
 Fluorescence **STRONG**  
 Inscription(s) **IGI LG669450709**

Comments: This Laboratory Grown  
 Diamond was created by  
 Chemical Vapor Deposition (CVD)  
 growth process. Indications of  
 post-growth treatment.

THIS DOCUMENT WAS PRODUCED WITH THE FOLLOWING SECURITY MEASURES: SPECIAL DOCUMENT PAPER, INK SCREENS, WATERMARK, BACKGROUND DESIGN, HOLOGRAM AND OTHER SECURITY FEATURES NOT LISTED AND DO EXCEED DOCUMENT SECURITY INDUSTRY GUIDELINES.

For terms & conditions and to verify this report, please visit [www.igi.org](http://www.igi.org)