



ELECTRONIC COPY

LG669450576
Report verification at igi.org



February 6, 2025

IGI Report Number **LG669450576**

Description **LABORATORY GROWN DIAMOND**

Shape and Cutting Style **ROUND BRILLIANT**

Measurements **10.77 - 10.81 X 6.53 MM**

GRADING RESULTS

Carat Weight **4.67 CARATS**

Color Grade **FANCY INTENSE PINK**

Clarity Grade **VS 2**

Cut Grade **EXCELLENT**

February 6, 2025

IGI Report Number **LG669450576**

Description **LABORATORY GROWN DIAMOND**

Shape and Cutting Style **ROUND BRILLIANT**

Measurements **10.77 - 10.81 X 6.53 MM**

GRADING RESULTS

Carat Weight **4.67 CARATS**

Color Grade **FANCY INTENSE PINK**

Clarity Grade **VS 2**

Cut Grade **EXCELLENT**

ADDITIONAL GRADING INFORMATION

Polish **VERY GOOD**

Symmetry **VERY GOOD**

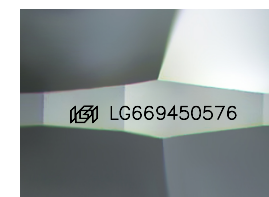
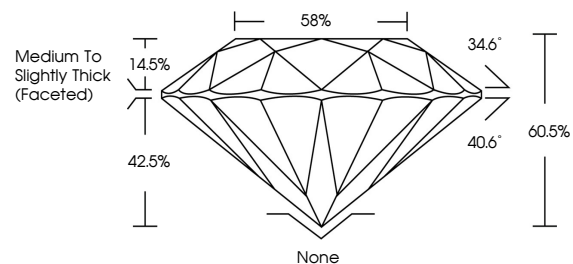
Fluorescence **SLIGHT**

Inscription(s) **LG669450576**

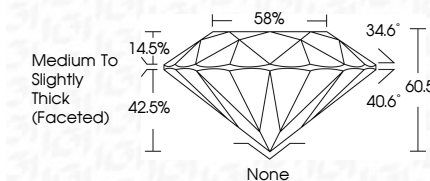
Comments: HEARTS & ARROWS

This Laboratory Grown Diamond was created by Chemical Vapor Deposition (CVD) growth process. Indications of post-growth treatment.

PROPORTIONS



Sample Image Used



COLOR

D E F G H I J Faint Very Light Light

CLARITY

IF VS¹⁻² VS¹⁻² SI¹⁻² I¹⁻³

Internally Flawless Very Very Slightly Included Very Slightly Included Slightly Included Included

ADDITIONAL GRADING INFORMATION

Polish **VERY GOOD**

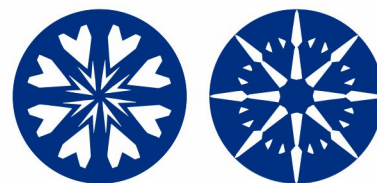
Symmetry **VERY GOOD**

Fluorescence **SLIGHT**

Inscription(s) **LG669450576**

Comments: HEARTS & ARROWS

This Laboratory Grown Diamond was created by Chemical Vapor Deposition (CVD) growth process. Indications of post-growth treatment.



www.igi.org



© IGI 2020, International Gemological Institute

FD - 10 20



IGI

February 6, 2025	IGI Report No LG669450576	ROUND BRILLIANT	10.77 - 10.81 X 6.53 MM	4.67 CARATS	FANCY INTENSE PINK	VS 2	EXCELLENT	60.5%	58%	Medium To Slightly Thick (Faceted)	None	VERY GOOD	VERY GOOD	SLIGHT	LG669450576
Comments: HEARTS & ARROWS		This Laboratory Grown Diamond was created by Chemical Vapor Deposition (CVD) growth process. Indications of post-growth treatment.													