



**ELECTRONIC COPY**

LG669450540  
Report verification at igi.org



February 6, 2025

IGI Report Number **LG669450540**

Description **LABORATORY GROWN DIAMOND**

Shape and Cutting Style **ROUND BRILLIANT**

Measurements **9.27 - 9.35 X 5.76 MM**

**GRADING RESULTS**

Carat Weight **3.11 CARATS**

Color Grade **FANCY VIVID BLUE**

Clarity Grade **VS 2**

Cut Grade **EXCELLENT**

February 6, 2025

IGI Report Number **LG669450540**

Description **LABORATORY GROWN DIAMOND**

Shape and Cutting Style **ROUND BRILLIANT**

Measurements **9.27 - 9.35 X 5.76 MM**

**GRADING RESULTS**

Carat Weight **3.11 CARATS**

Color Grade **FANCY VIVID BLUE**

Clarity Grade **VS 2**

Cut Grade **EXCELLENT**

**ADDITIONAL GRADING INFORMATION**

Polish **EXCELLENT**

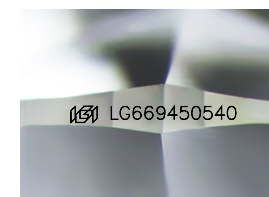
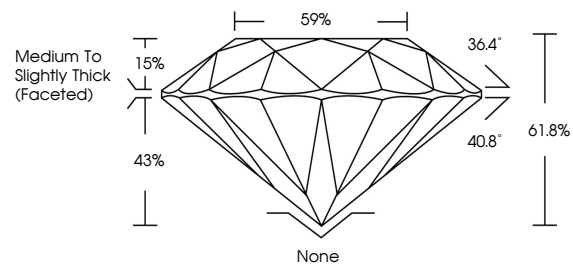
Symmetry **EXCELLENT**

Fluorescence **NONE**

Inscription(s) **LG669450540**

Comments: HEARTS & ARROWS  
This Laboratory Grown Diamond was created by  
Chemical Vapor Deposition (CVD) growth process.  
Indications of post-growth treatment.

**PROPORTIONS**



Sample Image Used

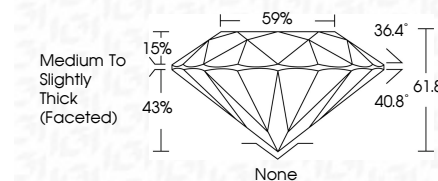
**COLOR**

D E F G H I J Faint Very Light Light

**CLARITY**

IF VS<sup>1-2</sup> VS<sup>1-2</sup> SI<sup>1-2</sup> I<sup>1-3</sup>

Internally Flawless Very Very Slightly Included Very Slightly Included Slightly Included Included



**ADDITIONAL GRADING INFORMATION**

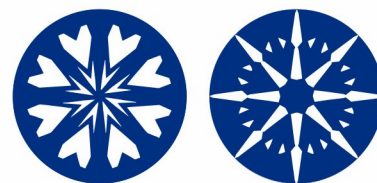
Polish **EXCELLENT**

Symmetry **EXCELLENT**

Fluorescence **NONE**

Inscription(s) **LG669450540**

Comments: HEARTS & ARROWS  
This Laboratory Grown Diamond was created by  
Chemical Vapor Deposition (CVD) growth process.  
Indications of post-growth treatment.



www.igi.org



**IGI**

February 6, 2025	IGI Report No LG669450540	3.11 CARATS	FANCY VIVID BLUE	VS 2	EXCELLENT	61.8%	59%	Medium To Slightly Thick (Faceted)	None	EXCELLENT	EXCELLENT	NONE	LG669450540
ROUND BRILLIANT	9.27 - 9.35 X 5.76 MM	Carat Weight	Color Grade	Clarity Grade	Cut Grade	Depth	Table	Girdle	Culet	Polish	Symmetry	Fluorescence	Inscription(s)