



ELECTRONIC COPY

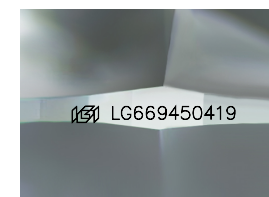
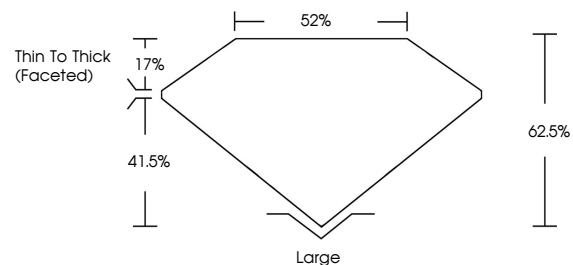
LG669450419
Report verification at igi.org



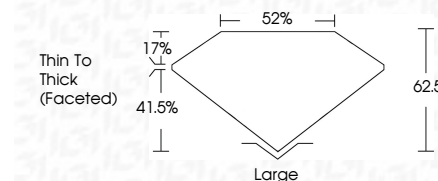
January 7, 2025
IGI Report Number **LG669450419**
Description **LABORATORY GROWN DIAMOND**
Shape and Cutting Style **CUSHION MODIFIED BRILLIANT**
Measurements **11.90 X 8.79 X 5.49 MM**
GRADING RESULTS
Carat Weight **4.25 CARATS**
Color Grade **FANCY INTENSE PINK**
Clarity Grade **VS 1**

January 7, 2025
IGI Report Number **LG669450419**
Description **LABORATORY GROWN DIAMOND**
Shape and Cutting Style **CUSHION MODIFIED BRILLIANT**
Measurements **11.90 X 8.79 X 5.49 MM**
GRADING RESULTS
Carat Weight **4.25 CARATS**
Color Grade **FANCY INTENSE PINK**
Clarity Grade **VS 1**

PROPORTIONS



Sample Image Used



ADDITIONAL GRADING INFORMATION

Polish **VERY GOOD**
Symmetry **EXCELLENT**
Fluorescence **STRONG**
Inscription(s) **IGI LG669450419**

Comments: This Laboratory Grown Diamond was created by Chemical Vapor Deposition (CVD) growth process.
Indications of post-growth treatment.

Secondary color: Gray

ADDITIONAL GRADING INFORMATION

Polish **VERY GOOD**
Symmetry **EXCELLENT**
Fluorescence **STRONG**
Inscription(s) **IGI LG669450419**
Comments: This Laboratory Grown Diamond was created by Chemical Vapor Deposition (CVD) growth process.
Indications of post-growth treatment.
Secondary color: Gray

COLOR

D E F G H I J Faint Very Light Light

CLARITY

IF	VS ¹⁻²	VS ¹⁻²	SI ¹⁻²	I ¹⁻³
Internally Flawless	Very Very Slightly Included	Very Slightly Included	Slightly Included	Included



January 7, 2025
IGI Report No **LG669450419**
CUSHION MODIFIED BRILLIANT
4.25 CARATS
Carat Weight **FANCY INTENSE PINK**
Color Grade **VS 1**
Depth **62.5%**
Table **52%**
Girdle **Thin To Thick (Faceted)**
Culet **Large**
Polish **VERY GOOD**
Symmetry **EXCELLENT**
Fluorescence **STRONG**
Inscription(s) **IGI LG669450419**
Comments: This Laboratory Grown Diamond was created by Chemical Vapor Deposition (CVD) growth process.
Indications of post-growth treatment.
Secondary color: Gray