



ELECTRONIC COPY

LABORATORY GROWN DIAMOND REPORT

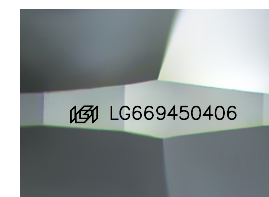
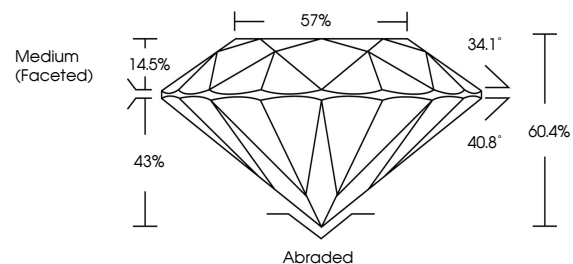
December 23, 2024
IGI Report Number **LG669450406**
Description **LABORATORY GROWN DIAMOND**
Shape and Cutting Style **ROUND BRILLIANT**
Measurements **6.66 - 6.69 X 4.03 MM**
GRADING RESULTS
Carat Weight **1.10 CARAT**
Color Grade **FANCY INTENSE PINK**
Clarity Grade **VS 1**
Cut Grade **VERY GOOD**

ADDITIONAL GRADING INFORMATION

Polish **GOOD**
Symmetry **EXCELLENT**
Fluorescence **STRONG**
Inscription(s) **LG669450406**

Comments: HEARTS & ARROWS
This Laboratory Grown Diamond was created by Chemical Vapor Deposition (CVD) growth process. Indications of post-growth treatment.

PROPORTIONS



Sample Image Used

COLOR

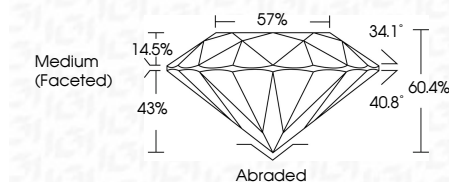
D E F G H I J Faint Very Light Light

CLARITY

IF VS¹⁻² VS¹⁻² SI¹⁻² I¹⁻³
Internally Flawless Very Very Slightly Included Very Slightly Included Slightly Included Included



December 23, 2024
IGI Report Number **LG669450406**
Description **LABORATORY GROWN DIAMOND**
Shape and Cutting Style **ROUND BRILLIANT**
Measurements **6.66 - 6.69 X 4.03 MM**
GRADING RESULTS
Carat Weight **1.10 CARAT**
Color Grade **FANCY INTENSE PINK**
Clarity Grade **VS 1**
Cut Grade **VERY GOOD**



ADDITIONAL GRADING INFORMATION

Polish **GOOD**
Symmetry **EXCELLENT**
Fluorescence **STRONG**
Inscription(s) **LG669450406**
Comments: HEARTS & ARROWS
This Laboratory Grown Diamond was created by Chemical Vapor Deposition (CVD) growth process. Indications of post-growth treatment.



IGI

December 23, 2024
IGI Report No **LG669450406**
ROUND BRILLIANT
Carat Weight **1.10 CARAT**
Color Grade **FANCY INTENSE PINK**
Clarity Grade **VS 1**
Depth **60.4%**
Table **14.5%**
Girdle **57%**
Medium (Faceted)
Cutler **Abraded**
Polish **GOOD**
Symmetry **EXCELLENT**
Fluorescence **STRONG**
Inscriptions(s) **LG669450406**
Comments: **HEARTS & ARROWS**
This Laboratory Grown Diamond was created by Chemical Vapor Deposition (CVD) growth process. Indications of post-growth treatment.