



**ELECTRONIC COPY**

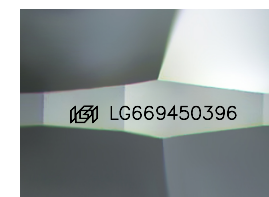
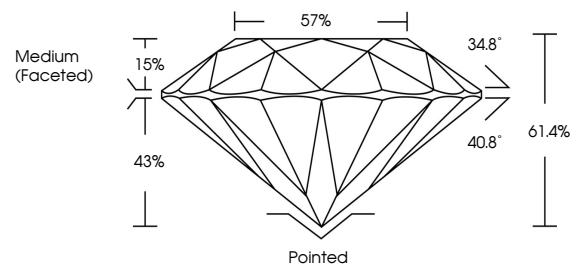
LG669450396  
Report verification at [igi.org](http://igi.org)



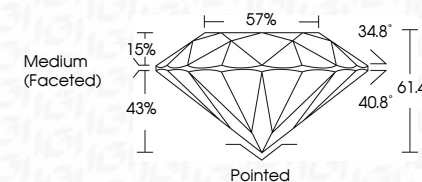
December 19, 2024  
IGI Report Number **LG669450396**  
Description **LABORATORY GROWN DIAMOND**  
Shape and Cutting Style **ROUND BRILLIANT**  
Measurements **10.20 - 10.26 X 6.28 MM**  
**GRADING RESULTS**  
Carat Weight **4.02 CARATS**  
Color Grade **FANCY PINK**  
Clarity Grade **VS 1**  
Cut Grade **IDEAL**

December 19, 2024  
IGI Report Number **LG669450396**  
Description **LABORATORY GROWN DIAMOND**  
Shape and Cutting Style **ROUND BRILLIANT**  
Measurements **10.20 - 10.26 X 6.28 MM**  
**GRADING RESULTS**  
Carat Weight **4.02 CARATS**  
Color Grade **FANCY PINK**  
Clarity Grade **VS 1**  
Cut Grade **IDEAL**

**PROPORTIONS**



Sample Image Used



**ADDITIONAL GRADING INFORMATION**

Polish **EXCELLENT**  
Symmetry **EXCELLENT**  
Fluorescence **STRONG**  
Inscription(s) **IGI LG669450396**

Comments: This Laboratory Grown Diamond was created by Chemical Vapor Deposition (CVD) growth process.  
Indications of post-growth treatment.

**ADDITIONAL GRADING INFORMATION**

Polish **EXCELLENT**  
Symmetry **EXCELLENT**  
Fluorescence **STRONG**  
Inscription(s) **IGI LG669450396**  
Comments: This Laboratory Grown Diamond was created by Chemical Vapor Deposition (CVD) growth process.  
Indications of post-growth treatment.

**COLOR**

D E F G H I J Faint Very Light Light

**CLARITY**

IF	VS <sup>1-2</sup>	VS <sup>1-2</sup>	SI <sup>1-2</sup>	I <sup>1-3</sup>
Internally Flawless	Very Very Slightly Included	Very Slightly Included	Slightly Included	Included



**IGI**



December 19, 2024  
IGI Report No **LG669450396**  
**ROUND BRILLIANT**

**4.02 CARATS**  
**FANCY PINK**  
**VS 1**  
**IDEAL**  
**61.4%**  
**57%**  
Medium (Faceted)

Pointed  
**EXCELLENT**  
**EXCELLENT**  
**STRONG**  
Inscription(s)  
**IGI LG669450396**

Comments: This Laboratory Grown Diamond was created by Chemical Vapor Deposition (CVD) growth process.  
Indications of post-growth treatment.