



INTERNATIONAL GEMOLOGICAL INSTITUTE

LABORATORY GROWN DIAMOND REPORT

December 14, 2024

IGI Report Number

LG669448750

Description

LABORATORY GROWN DIAMOND

Shape and Cutting Style

ROUND BRILLIANT

Measurements

5.31 - 5.36 X 3.35 MM

GRADING RESULTS

Carat Weight

0.59 CARAT

Color Grade

E

Clarity Grade

VVS 2

Cut Grade

EXCELLENT

ADDITIONAL GRADING INFORMATION

Polish

VERY GOOD

Symmetry

VERY GOOD

Fluorescence

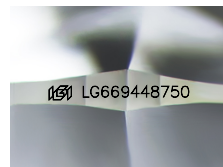
NONE

Inscription(s)

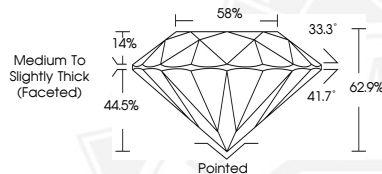
IGI LG669448750

Comments: This Laboratory Grown Diamond was created by Chemical Vapor Deposition (CVD) growth process. Type IIa

ELECTRONIC COPY



Sample Image Used



December 14, 2024

IGI Report Number LG669448750

ROUND BRILLIANT

LABORATORY GROWN DIAMOND

5.31 - 5.36 X 3.35 MM

Carat Weight 0.59 CARAT

Color Grade E

Clarity Grade VVS 2

Cut Grade EXCELLENT

Polish VERY GOOD

Symmetry VERY GOOD

Fluorescence NONE

Inscription(s) IGI LG669448750

Comments: This Laboratory Grown Diamond was created by Chemical Vapor Deposition (CVD) growth process. Type IIa



December 14, 2024

IGI Report Number LG669448750

ROUND BRILLIANT

LABORATORY GROWN DIAMOND

5.31 - 5.36 X 3.35 MM

Carat Weight 0.59 CARAT

Color Grade E

Clarity Grade VVS 2

Cut Grade EXCELLENT

Polish VERY GOOD

Symmetry VERY GOOD

Fluorescence NONE

Inscription(s) IGI LG669448750

Comments: This Laboratory Grown Diamond was created by Chemical Vapor Deposition (CVD) growth process. Type IIa



THIS DOCUMENT WAS PRODUCED WITH THE FOLLOWING SECURITY MEASURES: SPECIAL DOCUMENT PAPER, INK SCREENS, WATERMARK, BACKGROUND DESIGN, HOLOGRAM AND OTHER SECURITY FEATURES NOT LISTED AND DO EXCEED DOCUMENT SECURITY INDUSTRY GUIDELINES.

For terms & conditions and to verify this report, please visit www.igi.org