



ELECTRONIC COPY

LABORATORY GROWN DIAMOND REPORT

December 20, 2024  
IGI Report Number **LG669444952**  
Description **LABORATORY GROWN DIAMOND**  
Shape and Cutting Style **SQUARE CUSHION BRILLIANT**  
Measurements **5.63 X 5.53 X 3.65 MM**

GRADING RESULTS

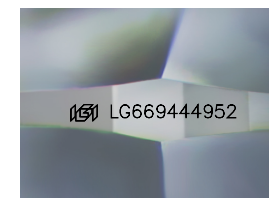
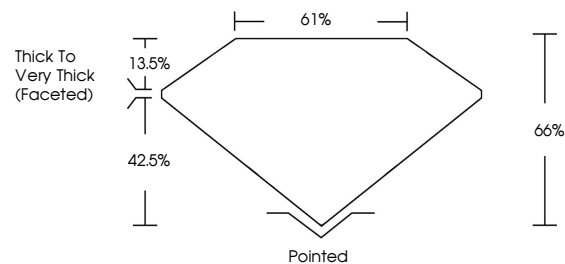
Carat Weight **1.07 CARAT**  
Color Grade **FANCY VIVID PINK**  
Clarity Grade **VVS 2**

ADDITIONAL GRADING INFORMATION

Polish **EXCELLENT**  
Symmetry **EXCELLENT**  
Fluorescence **SLIGHT**  
Inscription(s) **LG669444952**

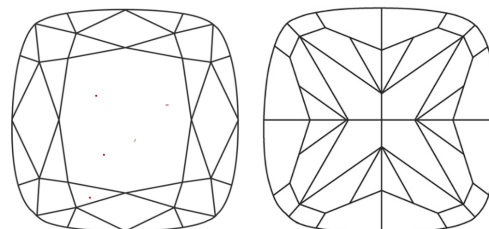
Comments: This Laboratory Grown Diamond was created by Chemical Vapor Deposition (CVD) growth process.  
Indications of post-growth treatment.

PROPORTIONS



Sample Image Used

CLARITY CHARACTERISTICS



KEY TO SYMBOLS

Red symbols indicate internal characteristics.  
Green symbols indicate external characteristics.

COLOR

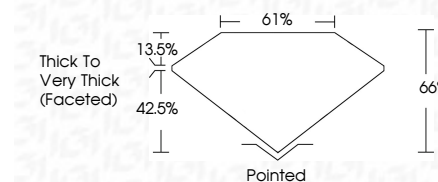
D E F G H I J Faint Very Light Light

CLARITY

IF VVS<sup>1-2</sup> VS<sup>1-2</sup> SI<sup>1-2</sup> I<sup>1-3</sup>  
Internally Flawless Very Very Slightly Included Very Slightly Included Slightly Included Included



December 20, 2024  
IGI Report Number **LG669444952**  
Description **LABORATORY GROWN DIAMOND**  
Shape and Cutting Style **SQUARE CUSHION BRILLIANT**  
Measurements **5.63 X 5.53 X 3.65 MM**  
**GRADING RESULTS**  
Carat Weight **1.07 CARAT**  
Color Grade **FANCY VIVID PINK**  
Clarity Grade **VVS 2**



ADDITIONAL GRADING INFORMATION

Polish **EXCELLENT**  
Symmetry **EXCELLENT**  
Fluorescence **SLIGHT**  
Inscription(s) **LG669444952**  
Comments: This Laboratory Grown Diamond was created by Chemical Vapor Deposition (CVD) growth process.  
Indications of post-growth treatment.



December 20, 2024  
IGI Report No **LG669444952**  
**SQUARE CUSHION BRILLIANT**  
**5.63 X 5.53 X 3.65 MM**  
Carat Weight **1.07 CARAT**  
Color Grade **FANCY VIVID PINK**  
Clarity Grade **VVS 2**  
Depth **66%**  
Table **61%**  
Girdle **Thick to Very Thick (Faceted)**  
Culet **Pointed**  
Polish **EXCELLENT**  
Symmetry **EXCELLENT**  
Fluorescence **SLIGHT**  
Inscription(s) **LG669444952**  
Comments: This Laboratory Grown Diamond was created by Chemical Vapor Deposition (CVD) growth process.  
Indications of post-growth treatment.