



**INTERNATIONAL  
GEMOLOGICAL  
INSTITUTE**

**ELECTRONIC COPY**

**LG669435305**

**LABORATORY GROWN DIAMOND REPORT**

December 16, 2024  
 IGI Report Number **LG669435305**  
 Description **LABORATORY GROWN DIAMOND**  
 Shape and Cutting Style **ROUND BRILLIANT**  
 Measurements **4.78 - 4.84 X 2.97 MM**

**GRADING RESULTS**

Carat Weight **0.42 CARAT**  
 Color Grade **D**  
 Clarity Grade **VVS 1**  
 Cut Grade **IDEAL**

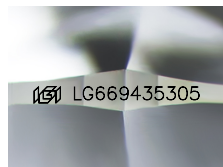
**ADDITIONAL GRADING INFORMATION**

Polish **EXCELLENT**  
 Symmetry **EXCELLENT**  
 Fluorescence **NONE**  
 Inscription(s) **IGI LG669435305**

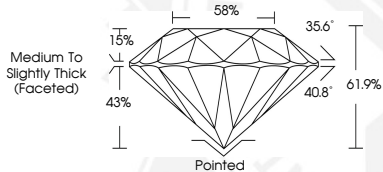
Comments: HEARTS & ARROWS  
 This Laboratory Grown Diamond was created by Chemical Vapor Deposition (CVD) growth process.  
 Type Iia



**HEARTS & ARROWS**



Sample Image Used



December 16, 2024  
 IGI Report Number **LG669435305**  
 ROUND BRILLIANT  
 LABORATORY GROWN DIAMOND  
 4.78 - 4.84 X 2.97 MM  
 Carat Weight **0.42 CARAT**  
 Color Grade **D**  
 Clarity Grade **VVS 1**  
 Cut Grade **IDEAL**  
 Polish **EXCELLENT**  
 Symmetry **EXCELLENT**  
 Fluorescence **NONE**  
 Inscription(s) **IGI LG669435305**  
 Comments: HEARTS & ARROWS This Laboratory Grown Diamond was created by Chemical Vapor Deposition (CVD) growth process.  
 Type Iia



December 16, 2024  
 IGI Report Number **LG669435305**  
 ROUND BRILLIANT  
 LABORATORY GROWN DIAMOND  
 4.78 - 4.84 X 2.97 MM  
 Carat Weight **0.42 CARAT**  
 Color Grade **D**  
 Clarity Grade **VVS 1**  
 Cut Grade **IDEAL**  
 Polish **EXCELLENT**  
 Symmetry **EXCELLENT**  
 Fluorescence **NONE**  
 Inscription(s) **IGI LG669435305**  
 Comments: HEARTS & ARROWS This Laboratory Grown Diamond was created by Chemical Vapor Deposition (CVD) growth process.  
 Type Iia

THIS DOCUMENT WAS PRODUCED WITH THE FOLLOWING SECURITY MEASURES: SPECIAL DOCUMENT PAPER, INK SCREENS, WATERMARK, BACKGROUND DESIGN, HOLOGRAM AND OTHER SECURITY FEATURES NOT LISTED AND DO EXCEED DOCUMENT SECURITY INDUSTRY GUIDELINES.

For terms & conditions and to verify this report, please visit [www.igi.org](http://www.igi.org)