



ELECTRONIC COPY

LG669431090
Report verification at igi.org



December 19, 2024

IGI Report Number **LG669431090**

Description **LABORATORY GROWN DIAMOND**

Shape and Cutting Style **CUT CORNERED
RECTANGULAR MODIFIED
BRILLIANT**

Measurements **12.30 X 8.56 X 5.76 MM**

GRADING RESULTS

Carat Weight **5.34 CARATS**

Color Grade **E**

Clarity Grade **VS 1**

December 19, 2024

IGI Report Number **LG669431090**

Description **LABORATORY GROWN DIAMOND**

Shape and Cutting Style **CUT CORNERED RECTANGULAR
MODIFIED BRILLIANT**

Measurements **12.30 X 8.56 X 5.76 MM**

GRADING RESULTS

Carat Weight **5.34 CARATS**

Color Grade **E**

Clarity Grade **VS 1**

ADDITIONAL GRADING INFORMATION

Polish **EXCELLENT**

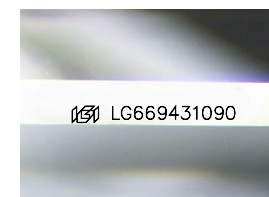
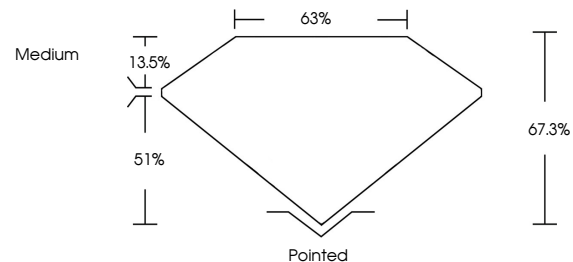
Symmetry **EXCELLENT**

Fluorescence **NONE**

Inscription(s) **IGI LG669431090**

Comments: This Laboratory Grown Diamond was created by Chemical Vapor Deposition (CVD) growth process.
Type IIa

PROPORTIONS



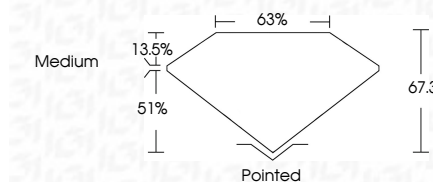
Sample Image Used

COLOR

D E F G H I J Faint Very Light Light

CLARITY

IF	VS ¹⁻²	VS ¹⁻²	SI ¹⁻²	I ¹⁻³
Internally Flawless	Very Very Slightly Included	Very Slightly Included	Slightly Included	Included



ADDITIONAL GRADING INFORMATION

Polish **EXCELLENT**

Symmetry **EXCELLENT**

Fluorescence **NONE**

Inscription(s) **IGI LG669431090**

Comments: This Laboratory Grown Diamond was created by Chemical Vapor Deposition (CVD) growth process.
Type IIa



IGI



December 19, 2024
IGI Report No. LG669431090
CUT CORNERED RECT. MODIFIED BRILLIANT
12.30 X 8.56 X 5.76 MM
5.34 CARATS
E
VS 1
67.3%
63%
Medium
Pointed
EXCELLENT
EXCELLENT
NONE
IGI LG669431090

Comments: This Laboratory Grown Diamond was created by Chemical Vapor Deposition (CVD) growth process.
Type IIa