



ELECTRONIC COPY

LG669427614 Report verification at igi.org



January 15, 2025 IGI Report Number LG669427614 Description LABORATORY GROWN DIAMOND Shape and Cutting Style ROUND MIXED CUT Measurements 7.55 - 7.54 X 4.63 MM

GRADING RESULTS

Carat Weight 1.66 CARAT Color Grade D Clarity Grade VS 1

January 15, 2025 IGI Report Number LG669427614 Description LABORATORY GROWN DIAMOND Shape and Cutting Style ROUND MIXED CUT Measurements 7.55 - 7.54 X 4.63 MM

GRADING RESULTS

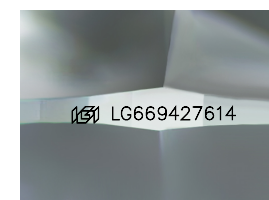
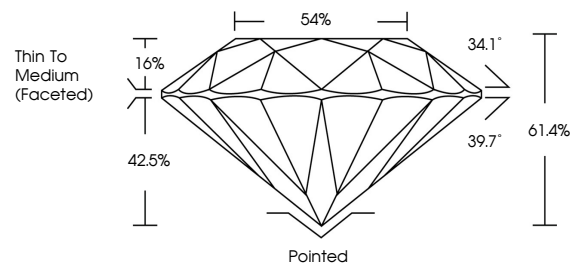
Carat Weight 1.66 CARAT Color Grade D Clarity Grade VS 1

ADDITIONAL GRADING INFORMATION

Polish EXCELLENT Symmetry EXCELLENT Fluorescence NONE Inscription(s) IGI LG669427614

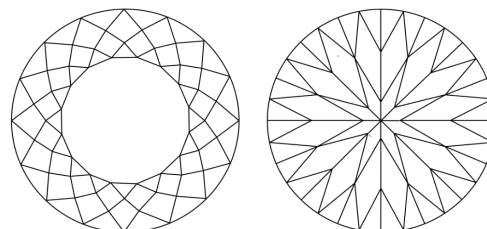
Comments: As Grown - No indication of post-growth treatment. This Laboratory Grown Diamond was created by High Pressure High Temperature (HPHT) growth process. Type II

PROPORTIONS



Sample Image Used

CLARITY CHARACTERISTICS



KEY TO SYMBOLS

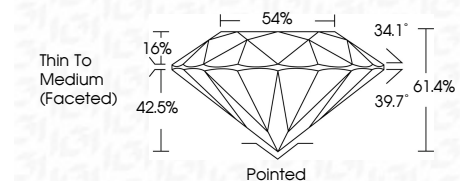
Red symbols indicate internal characteristics. Green symbols indicate external characteristics.

COLOR

D E F G H I J Faint Very Light Light

CLARITY

IF VS 1-2 VS 1-2 SI 1-2 I 1-3 Internally Flawless Very Very Slightly Included Very Slightly Included Slightly Included Included



ADDITIONAL GRADING INFORMATION

Polish EXCELLENT Symmetry EXCELLENT Fluorescence NONE Inscription(s) IGI LG669427614 Comments: As Grown - No indication of post-growth treatment. This Laboratory Grown Diamond was created by High Pressure High Temperature (HPHT) growth process. Type II



January 15, 2025 IGI Report No LG669427614 ROUND MIXED CUT 1.66 CARAT D VS 1 61.4% 54% Thin To Medium (Faceted) Pointed EXCELLENT EXCELLENT NONE NONE IGI LG669427614 Comments: As Grown - No indication of post-growth treatment. This Laboratory Grown Diamond was created by High Pressure High Temperature (HPHT) growth process. Type II