



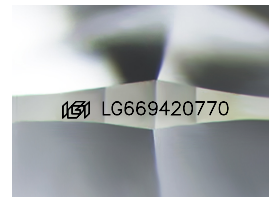
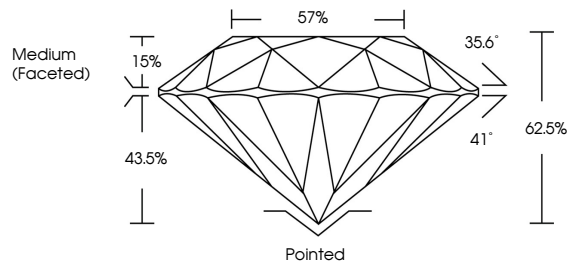
**INTERNATIONAL  
GEMOLOGICAL  
INSTITUTE**

**ELECTRONIC COPY**

## LABORATORY GROWN DIAMOND REPORT

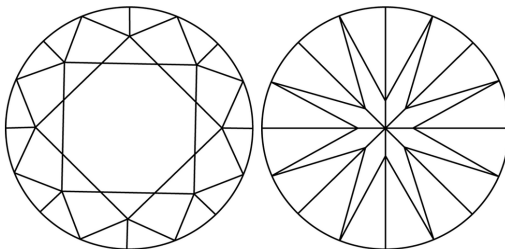
LG669420770  
Report verification at [igi.org](https://igi.org)

## PROPORTIONS



Sample Image Used

## CLARITY CHARACTERISTICS



## KEY TO SYMBOLS

Red symbols indicate internal characteristics.  
Green symbols indicate external characteristics.

**COLOR**

D E F G H I J Faint Very Light Light

## CLARITY

IF      WS<sup>1-2</sup>      VS<sup>1-2</sup>      SI<sup>1-2</sup>      I<sup>1-3</sup>

|                        |                                |                           |                      |          |
|------------------------|--------------------------------|---------------------------|----------------------|----------|
| Internally<br>Flawless | Very Very<br>Slightly Included | Very<br>Slightly Included | Slightly<br>Included | Included |
|------------------------|--------------------------------|---------------------------|----------------------|----------|



© IGI 2020, International Gemological Institute

FD - 10 20

**www.igi.org**

THIS DOCUMENT WAS PRODUCED WITH THE FOLLOWING SECURITY MEASURES: SPECIAL DOCUMENT PAPER, INK SCREENS, WATERMARK, BACKGROUND DESIGNS, HOLOGRAM AND OTHER SECURITY FEATURES NOT LISTED AND DO EXCEED DOCUMENT SECURITY INDUSTRY GUIDELINES

## LABORATORY GROWN DIAMOND REPORT



March 24, 2025

IGI Report Number **LG669420770**

|             |                          |
|-------------|--------------------------|
| Description | LABORATORY GROWN DIAMOND |
|-------------|--------------------------|

Shape and Cutting Style **ROUND BRILLIANT**

|              |                       |
|--------------|-----------------------|
| Measurements | 8.90 - 8.94 X 5.58 MM |
|--------------|-----------------------|

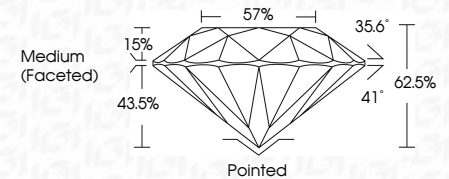
## GRADING RESULTS

Carat Weight **2.75 CARATS**

Color Grade **D**

Clarity Grade **INTERNALLY FLAWLESS**

Cut Grade **IDEAL**



### ADDITIONAL GRADING INFORMATION

Polish **EXCELLENT**

Symmetry **EXCELLENT**

Fluorescence **NONE**Inscription(s)  LG669420770

Comments: As Grown - No indication of post-growth treatment.

This Laboratory Grown Diamond was created by High Pressure High Temperature (HPHT) growth process.  
Type II



IGI

|                              |                                  |   |                  |                 |  |
|------------------------------|----------------------------------|---|------------------|-----------------|--|
| <b>March 24, 2025</b>        | <b>(G) Report No LG659420770</b> |   |                  |                 |  |
| <b>ROUND BRILLIANT</b>       |                                  |   |                  |                 |  |
| <b>8.90 - 8.94 X 5.58 MM</b> |                                  |   |                  |                 |  |
| Carat Weight                 | 2.75 CARATS                      | D | LF               | Pointed         | <b>Comments:</b><br>As Grown - No Indication of post-growth treatment.<br><br>This Laboratory Grown Diamond was created by High Pressure High temperature (HPHT) growth process. |
| Color Grade                  |                                  |   | IDEAL            | EXCELLENT       |  |
| Clarity Grade                |                                  |   | 62.5%            | EXCELLENT       |  |
| Cut Grade                    |                                  |   | 57%              | NONE            |  |
| Depth                        |                                  |   | Medium (Faceted) |                 |  |
| Table                        |                                  |   |                  |                 |  |
| Girdle                       |                                  |   | Inscriptions(s)  | LGS LG659420770 |  |
| Culet                        |                                  |   | Symmetry         |                 |  |
| Polish                       |                                  |   | Fluorescence     |                 |  |
|                              |                                  |   |                  |                 | Type II  |