



**ELECTRONIC COPY**

LG669415985  
Report verification at igi.org



December 14, 2024  
IGI Report Number **LG669415985**  
Description **LABORATORY GROWN DIAMOND**  
Shape and Cutting Style **CUT CORNERED  
RECTANGULAR MODIFIED  
BRILLIANT**  
Measurements **7.92 X 5.50 X 3.83 MM**  
**GRADING RESULTS**  
Carat Weight **1.57 CARAT**  
Color Grade **FANCY VIVID YELLOW**  
Clarity Grade **VS 1**

December 14, 2024  
IGI Report Number **LG669415985**  
Description **LABORATORY GROWN DIAMOND**  
Shape and Cutting Style **CUT CORNERED RECTANGULAR  
MODIFIED BRILLIANT**  
Measurements **7.92 X 5.50 X 3.83 MM**

**GRADING RESULTS**

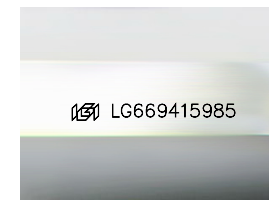
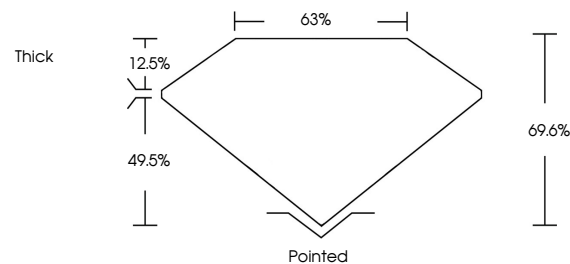
Carat Weight **1.57 CARAT**  
Color Grade **FANCY VIVID YELLOW**  
Clarity Grade **VS 1**

**ADDITIONAL GRADING INFORMATION**

Polish **EXCELLENT**  
Symmetry **EXCELLENT**  
Fluorescence **NONE**  
Inscription(s) **IGI LG669415985**

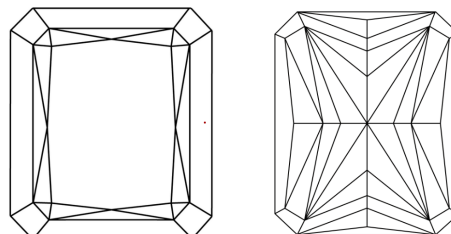
Comments: This Laboratory Grown Diamond was created by Chemical Vapor Deposition (CVD) growth process.

**PROPORTIONS**



Sample Image Used

**CLARITY CHARACTERISTICS**



**KEY TO SYMBOLS**

Red symbols indicate internal characteristics.  
Green symbols indicate external characteristics.

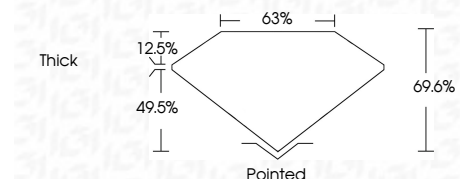
**COLOR**

D E F G H I J Faint Very Light Light

**CLARITY**

IF WS<sup>1-2</sup> VS<sup>1-2</sup> SI<sup>1-2</sup> I<sup>1-3</sup>

Internally Flawless Very Very Slightly Included Very Slightly Included Slightly Included Included



**ADDITIONAL GRADING INFORMATION**

Polish **EXCELLENT**  
Symmetry **EXCELLENT**  
Fluorescence **NONE**  
Inscription(s) **IGI LG669415985**  
Comments: This Laboratory Grown Diamond was created by Chemical Vapor Deposition (CVD) growth process.



December 14, 2024  
IGI Report No. LG669415985  
CUT CORNERED RECT. MODIFIED BRILLIANT  
7.92 X 5.50 X 3.83 MM  
1.57 CARAT  
FANCY VIVID YELLOW  
VS 1  
69.6%  
63%  
Thick  
Pointed  
EXCELLENT  
EXCELLENT  
NONE  
IGI LG669415985  
Comments: This Laboratory Grown Diamond was created by Chemical Vapor Deposition (CVD) growth process.