



ELECTRONIC COPY

LG669415569
Report verification at igi.org



December 14, 2024

IGI Report Number **LG669415569**

Description **LABORATORY GROWN DIAMOND**

Shape and Cutting Style **EMERALD CUT**

Measurements **8.79 X 5.90 X 4.01 MM**

GRADING RESULTS

Carat Weight **2.07 CARATS**

Color Grade **E**

Clarity Grade **VVS 2**

December 14, 2024
IGI Report Number **LG669415569**
Description **LABORATORY GROWN DIAMOND**
Shape and Cutting Style **EMERALD CUT**
Measurements **8.79 X 5.90 X 4.01 MM**

GRADING RESULTS

Carat Weight **2.07 CARATS**

Color Grade **E**

Clarity Grade **VVS 2**

ADDITIONAL GRADING INFORMATION

Polish **EXCELLENT**

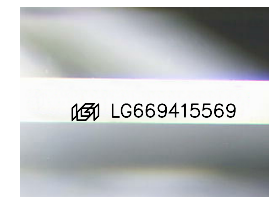
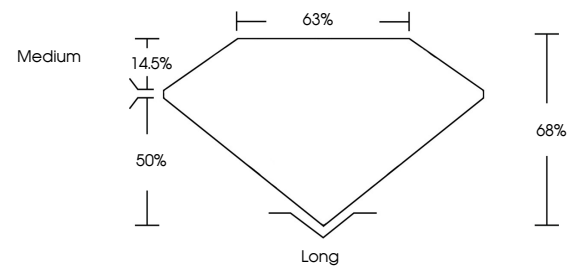
Symmetry **EXCELLENT**

Fluorescence **NONE**

Inscription(s) **LG669415569**

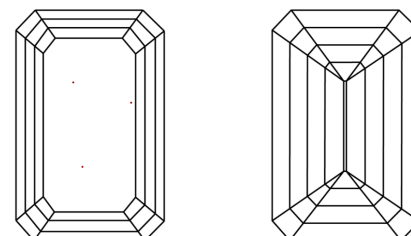
Comments: This Laboratory Grown Diamond was created by Chemical Vapor Deposition (CVD) growth process.
Type IIa

PROPORTIONS



Sample Image Used

CLARITY CHARACTERISTICS



KEY TO SYMBOLS

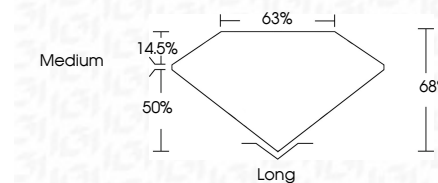
Red symbols indicate internal characteristics.
Green symbols indicate external characteristics.

COLOR

D E F G H I J Faint Very Light Light

CLARITY

| IF | VS ¹⁻² | VVS ¹⁻² | SI ¹⁻² | I ¹⁻³ |
|---------------------|-----------------------------|------------------------|-------------------|------------------|
| Internally Flawless | Very Very Slightly Included | Very Slightly Included | Slightly Included | Included |



ADDITIONAL GRADING INFORMATION

Polish **EXCELLENT**

Symmetry **EXCELLENT**

Fluorescence **NONE**

Inscription(s) **LG669415569**

Comments: This Laboratory Grown Diamond was created by Chemical Vapor Deposition (CVD) growth process.
Type IIa



IGI



December 14, 2024
IGI Report No. **LG669415569**
EMERALD CUT
8.79 X 5.90 X 4.01 MM
2.07 CARATS
E
Color Grade **VVS 2**
Depth 68%
Table 63%
Medium
Long
Cutlet **EXCELLENT**
Polish **EXCELLENT**
Symmetry **EXCELLENT**
Fluorescence **NONE**
Inscription(s) **LG669415569**
Comments: This Laboratory Grown Diamond was created by Chemical Vapor Deposition (CVD) growth process.
Type IIa