

**ELECTRONIC COPY**

## LABORATORY GROWN DIAMOND REPORT

December 11, 2024	
IGI Report Number	LG669410143
Description	LABORATORY GROWN DIAMOND
Shape and Cutting Style	CUT CORNERED RECTANGULAR MODIFIED BRILLIANT
Measurements	8.16 X 5.64 X 3.84 MM

## GRADING RESULTS

Carat Weight	1.55 CARAT
Color Grade	D
Clarity Grade	VS 1

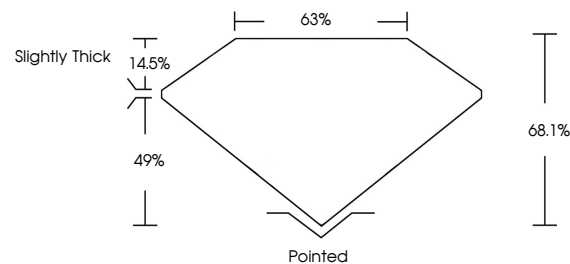
### ADDITIONAL GRADING INFORMATION

Polish	EXCELLENT
Symmetry	EXCELLENT
Fluorescence	NONE
Inscription(s)	15 LG669410143

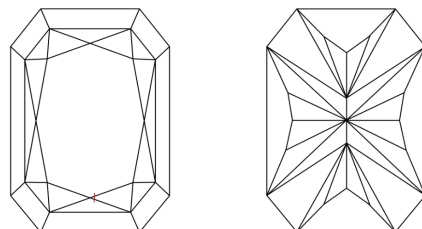
Comments: This Laboratory Grown Diamond was created by Chemical Vapor Deposition (CVD) growth process.  
Type IIa

LG669410143  
Report verification at [lgi.org](https://lgi.org)

## PROPORTIONS

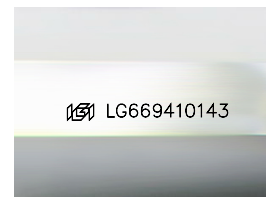


## CLARITY CHARACTERISTICS



### KEY TO SYMBOLS

Red symbols indicate internal characteristics.  
Green symbols indicate external characteristics.



Sample Image Used

## COLOR

D E F G H I J Faint Very Light Light

## CLARITY

IF	VS <sup>1-2</sup>	VS <sup>1-2</sup>	SI <sup>1-2</sup>	I <sup>1-3</sup>
Internally Flawless	Very Very Slightly Included	Very Slightly Included	Slightly Included	Included

## LABORATORY GROWN DIAMOND REPORT

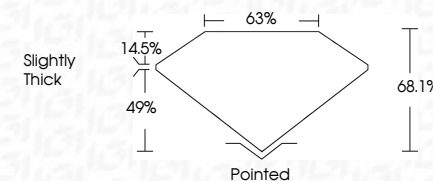


December 11, 2024	
IGI Report Number	LG669410143
Description	LABORATORY GROWN DIAMOND
Shape and Cutting Style	CUT CORNERED RECTANGULAR MODIFIED BRILLIANT

Measurements **8.16 X 5.64 X 3.84 MM**

## GRADING RESULTS

Carat Weight	1.55 CARAT
Color Grade	D
Clarity Grade	VS 1



### ADDITIONAL GRADING INFORMATION

Polish	EXCELLENT
Symmetry	EXCELLENT
Fluorescence	NONE
Inscription(s)	 LG669410143
Comments: This Laboratory Grown Diamond was created by Chemical Vapor Deposition (CVD) growth process.	
Type IIa	



© IGI 2020, International Gemological Institute

FD - 10 20

**www.igi.org**

THIS DOCUMENT WAS PRODUCED WITH THE FOLLOWING SECURITY MEASURES: SPECIAL DOCUMENT PAPER, INK SCREENS, WATERMARK, BACKGROUND DESIGNS, HOLOGRAM AND OTHER SECURITY FEATURES NOT LISTED AND DO EXCEED DOCUMENT SECURITY INDUSTRY GUIDELINE

December 11, 2024	G1 Report No. G569410143	
CUT CORNERED RECT. MODIFIED BRILLIANT		
16.5 X 5.4 X 3.84 MM		
Carat Weight	1.55 CARAT	
Color Grade	D	
Clarity Grade	VS 1	
Depth	64.1%	
Table	63%	
Girdle	Slightly Thick	
Culet	Pointed	
Polish	Excellent	
Symmetry	Excellent	
Fluorescence	NONE	
Inscription(s)	G61 G569410143	
<p>Comments: This is a Natural, Fancy, Green Diamond w/assessed by the Gemological Institute of America (GIA) and certified by Chemical Vapor Deposition (CVD) growth process.</p> <p>Type IIA</p>		