



ELECTRONIC COPY

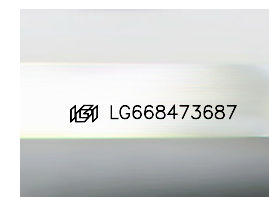
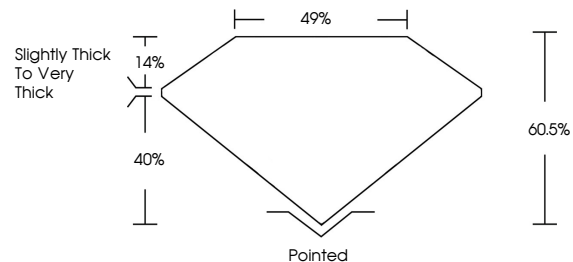
LABORATORY GROWN DIAMOND REPORT

December 11, 2024
 IGI Report Number **LG668473687**
 Description **LABORATORY GROWN DIAMOND**
 Shape and Cutting Style **FREEFORM MIXED CUT**
 Measurements **9.75 X 6.81 X 4.12 MM**
GRADING RESULTS
 Carat Weight **1.34 CARAT**
 Color Grade **D**
 Clarity Grade **VS 1**

ADDITIONAL GRADING INFORMATION

Polish **VERY GOOD**
 Symmetry **VERY GOOD**
 Fluorescence **NONE**
 Inscription(s) **IGI LG668473687**
 Comments: This Laboratory Grown Diamond was created by Chemical Vapor Deposition (CVD) growth process.
 Type IIa

PROPORTIONS



Sample Image Used

COLOR

D E F G H I J Faint Very Light Light

CLARITY

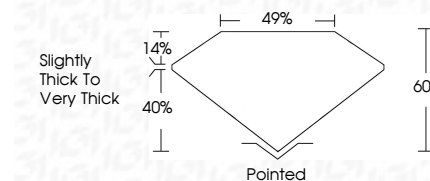
IF	VS ¹⁻²	VS ¹⁻²	SI ¹⁻²	I ¹⁻³
Internally Flawless	Very Very Slightly Included	Very Slightly Included	Slightly Included	Included



December 11, 2024
 IGI Report Number **LG668473687**
 Description **LABORATORY GROWN DIAMOND**
 Shape and Cutting Style **FREEFORM MIXED CUT**
 Measurements **9.75 X 6.81 X 4.12 MM**
GRADING RESULTS
 Carat Weight **1.34 CARAT**
 Color Grade **D**
 Clarity Grade **VS 1**

ADDITIONAL GRADING INFORMATION

Polish **VERY GOOD**
 Symmetry **VERY GOOD**
 Fluorescence **NONE**
 Inscription(s) **IGI LG668473687**
 Comments: This Laboratory Grown Diamond was created by Chemical Vapor Deposition (CVD) growth process.
 Type IIa



December 11, 2024
 IGI Report No LG668473687
FREEFORM MIXED CUT
 9.75 X 6.81 X 4.12 MM
 1.34 CARAT
 D
 VS 1
 60.5%
 49%
 Slightly Thick To Very Thick
 Pointed
 VERY GOOD
 VERY GOOD
 NONE
 IGI LG668473687
 Comments: This Laboratory Grown Diamond was created by Chemical Vapor Deposition (CVD) growth process.
 Type IIa