



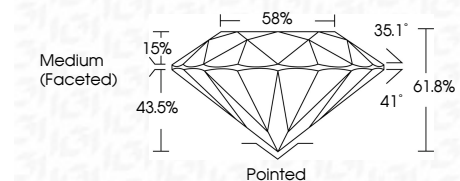
ELECTRONIC COPY

LG668469092
Report verification at igi.org



December 12, 2024
IGI Report Number LG668469092
Description LABORATORY GROWN DIAMOND
Shape and Cutting Style ROUND BRILLIANT
Measurements 9.09 - 9.12 X 5.62 MM

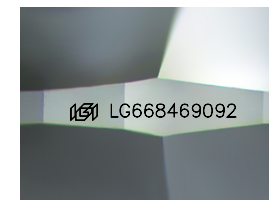
GRADING RESULTS
Carat Weight 2.87 CARATS
Color Grade E
Clarity Grade VS 1
Cut Grade IDEAL



ADDITIONAL GRADING INFORMATION
Polish EXCELLENT
Symmetry EXCELLENT
Fluorescence NONE
Inscription(s) IGI LG668469092
Comments: HEARTS & ARROWS
This Laboratory Grown Diamond was created by Chemical Vapor Deposition (CVD) growth process. Type IIa

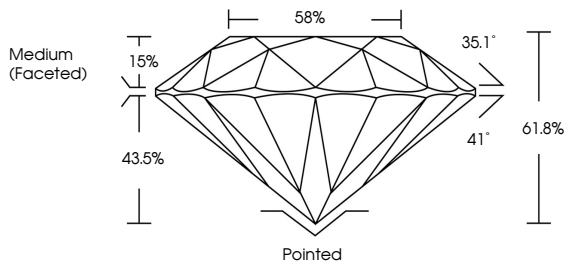


December 12, 2024
IGI Report No LG668469092
ROUND BRILLIANT
9.09 - 9.12 X 5.62 MM
2.87 CARATS
E
VS 1
IDEAL
61.8%
58%
Medium (Faceted)
Pointed
EXCELLENT
EXCELLENT
NONE
IGI LG668469092
Comments: HEARTS & ARROWS
This Laboratory Grown Diamond was created by Chemical Vapor Deposition (CVD) growth process. Type IIa

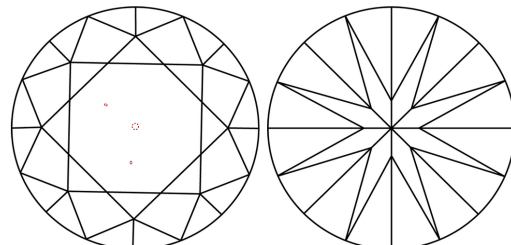


Sample Image Used

PROPORTIONS



CLARITY CHARACTERISTICS



KEY TO SYMBOLS
Red symbols indicate internal characteristics.
Green symbols indicate external characteristics.



COLOR

Table with columns D, E, F, G, H, I, J and corresponding color descriptions: Flawless, Very Very Slightly Included, Very Slightly Included, Slightly Included, Included.

CLARITY

Table with columns IF, VS 1-2, VS 1-2, SI 1-2, I 1-3 and corresponding clarity descriptions: Internally Flawless, Very Very Slightly Included, Very Slightly Included, Slightly Included, Included.



December 12, 2024
IGI Report Number LG668469092
Description LABORATORY GROWN DIAMOND
Shape and Cutting Style ROUND BRILLIANT
Measurements 9.09 - 9.12 X 5.62 MM

GRADING RESULTS
Carat Weight 2.87 CARATS
Color Grade E
Clarity Grade VS 1
Cut Grade IDEAL

ADDITIONAL GRADING INFORMATION
Polish EXCELLENT
Symmetry EXCELLENT
Fluorescence NONE
Inscription(s) IGI LG668469092

Comments: HEARTS & ARROWS
This Laboratory Grown Diamond was created by Chemical Vapor Deposition (CVD) growth process. Type IIa