



**ELECTRONIC COPY**

## LABORATORY GROWN DIAMOND REPORT

December 9, 2024	
IGI Report Number	LG668467679
Description	LABORATORY GROWN DIAMOND
Shape and Cutting Style	CUT CORNERED RECTANGULAR MODIFIED BRILLIANT
Measurements	8.98 X 6.10 X 3.77 MM

## GRADING RESULTS

Carat Weight	1.84 CARAT
Color Grade	D
Clarity Grade	VVS 2

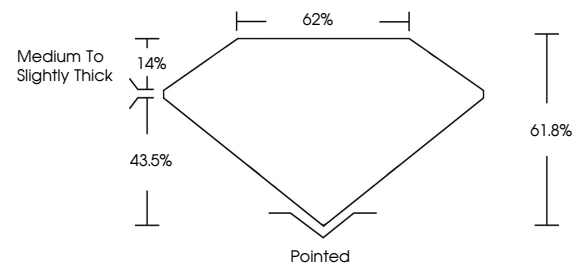
### ADDITIONAL GRADING INFORMATION

Polish	EXCELLENT
Symmetry	EXCELLENT
Fluorescence	NONE
Inscription(s)	LABGROWN 1131 LG668467679

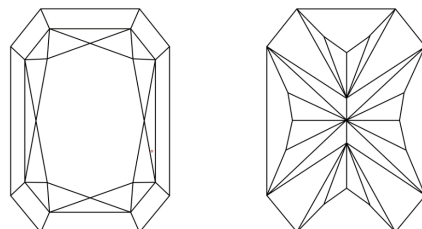
Comments: This Laboratory Grown Diamond was created by Chemical Vapor Deposition (CVD) growth process.  
Type IIa

LG668467679  
Report verification at [igi.org](https://igi.org)

## PROPORTIONS

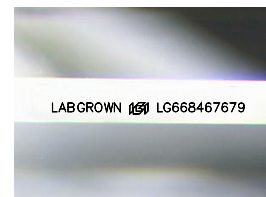


## CLARITY CHARACTERISTICS



## KEY TO SYMBOLS

Red symbols indicate internal characteristics.  
Green symbols indicate external characteristics.



Sample Image Used

## COLOR

D E F G H I J Faint Very Light Light

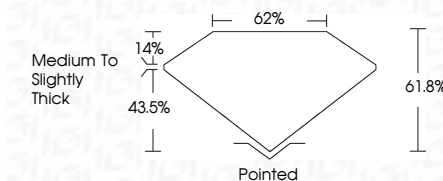
## CLARITY

IF	VS <sup>1-2</sup>	VS <sup>1-2</sup>	SI <sup>1-2</sup>	I <sup>1-3</sup>
Internally Flawless	Very Very Slightly Included	Very Slightly Included	Slightly Included	Included

## LABORATORY GROWN DIAMOND REPORT



December 9, 2024	
IGI Report Number	LG668467679
Description	LABORATORY GROWN DIAMOND
Shape and Cutting Style	CUT CORNERED RECTANGULAR MODIFIED BRILLIANT
Measurements	8.98 X 6.10 X 3.77 MM
<b>GRADING RESULTS</b>	
Carat Weight	1.84 CARAT
Color Grade	D
Clarity Grade	VVS 2



### ADDITIONAL GRADING INFORMATION

Polish	EXCELLENT
Symmetry	EXCELLENT
Fluorescence	NONE
Inscription(s)	LABGROWN (IGI) LG668467679
Comments: This Laboratory Grown Diamond was created by Chemical Vapor Deposition (CVD) growth process.	
Type IIa	



© IGI 2020, International Gemological Institute

FD - 10 20

**www.igi.org**



THIS DOCUMENT WAS PRODUCED WITH THE FOLLOWING SECURITY MEASURES: SPECIAL DOCUMENT PAPER, INK SCREENS, WATERMARK, BACKGROUND DESIGNS, HOLOGRAM AND OTHER SECURITY FEATURES NOT LISTED AND DO EXCEED DOCUMENT SECURITY INDUSTRY GUIDELINE

December 9, 2024	Weight Report No. LG686
100% CONFINED RECIPIENT	100% CONFINED RECIPIENT
8.98 X 6.10 X 3.77 MM	8.98 X 6.10 X 3.77 MM
Carat Weight	Carat Weight
Color Grade	Color Grade
Clarity Grade	Clarity Grade
Depth	Depth
Table	Table
Girdle	Girdle
Culet	Culet
Polish	Polish
Symmetry	Symmetry
Fluorescence	Fluorescence
Inscription(s)	Inscription(s)
Comments:	Comments:
This Laboratory Growth created by Chemical Vapor Deposition (CVD) growth process type IIa	This Laboratory Growth created by Chemical Vapor Deposition (CVD) growth process type IIa