

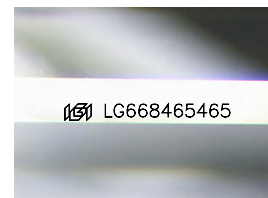
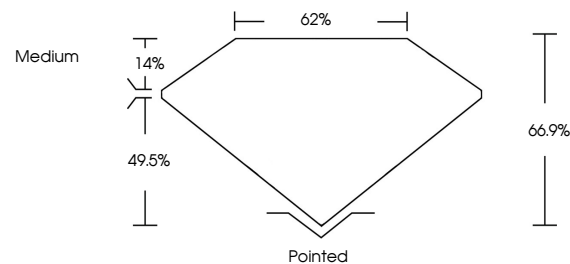


ELECTRONIC COPY

LABORATORY GROWN DIAMOND REPORT

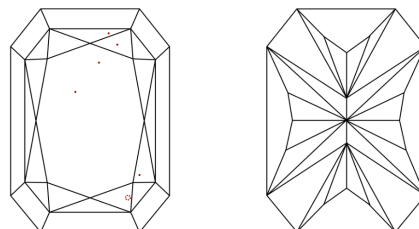
LG668465465
Report verification at igi.org

PROPORTIONS



Sample Image Used

CLARITY CHARACTERISTICS



KEY TO SYMBOLS

Red symbols indicate internal characteristics.
Green symbols indicate external characteristics.

COLOR

D E F G H I J Faint Very Light Light

CLARITY

IF	VS ¹⁻²	VS ¹⁻²	SI ¹⁻²	I ¹⁻³
Internally Flawless	Very Very Slightly Included	Very Slightly Included	Slightly Included	Included

LABORATORY GROWN DIAMOND REPORT



December 10, 2024

IGI Report Number **LG668465465**Description **LABORATORY GROWN DIAMOND**

Shape and Cutting Style

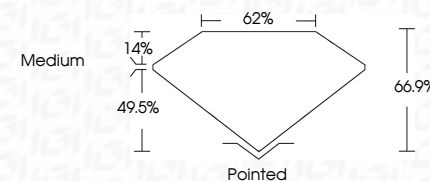
Measurements **8.28 X 5.74 X 3.84 MM**

GRADING RESULTS

Carat Weight **1.59 CARAT**

Color Grade D

Clarity Grade VS 1



ADDITIONAL GRADING INFORMATION

Polish EXCELLENT

Symmetry **EXCELLENT**Fluorescence NONEInscription(s) LG668465465

Comments: This Laboratory Grown Diamond was created by Chemical Vapor Deposition (CVD) growth process.
Type IIa



© IGI 2020, International Gemological Institute

FD - 10 20

www.igi.org

THIS DOCUMENT WAS PRODUCED WITH THE FOLLOWING SECURITY MEASURES: SPECIAL DOCUMENT PAPER, INK SCREENS, WATERMARK, BACKGROUND DESIGNS, HOLOGRAM AND OTHER SECURITY FEATURES NOT LISTED AND DO EXCEED DOCUMENT SECURITY INDUSTRY GUIDELINE

December 10, 2024	GI Report No LG64646465	CUT CORNERED RECT, MODIFIED BRILLIANT
20.28 X 8.74 X 3.64 MM	Carat Weight	1.59 CARAT
Color Grade	D	
Clarity Grade	Vs1	
Depth	66.9%	
Table	62%	
Grade	Medium	
Quiet	Polished	
Polish	EXCELLENT	
Symmetry	EXCELLENT	
Fluorescence	NONE	
Inscriptions(s)	lg61 LG64646465	
Comments:		
This Laboratory Grown Diamond was created by Chemical Vapor Deposition (CVD) growth process.		
Type IId		