



ELECTRONIC COPY

LG668464717
Report verification at igi.org



December 23, 2024

IGI Report Number **LG668464717**

Description **LABORATORY GROWN DIAMOND**

Shape and Cutting Style **CUT CORNERED
RECTANGULAR MODIFIED
BRILLIANT**

Measurements **9.22 X 6.28 X 4.27 MM**

GRADING RESULTS

Carat Weight **2.43 CARATS**

Color Grade **FANCY VIVID PINK**

Clarity Grade **VS 1**

December 23, 2024

IGI Report Number **LG668464717**

Description **LABORATORY GROWN DIAMOND**

Shape and Cutting Style **CUT CORNERED RECTANGULAR
MODIFIED BRILLIANT**

Measurements **9.22 X 6.28 X 4.27 MM**

GRADING RESULTS

Carat Weight **2.43 CARATS**

Color Grade **FANCY VIVID PINK**

Clarity Grade **VS 1**

ADDITIONAL GRADING INFORMATION

Polish **EXCELLENT**

Symmetry **EXCELLENT**

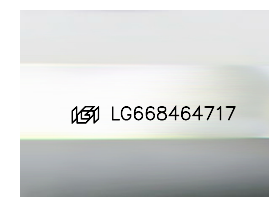
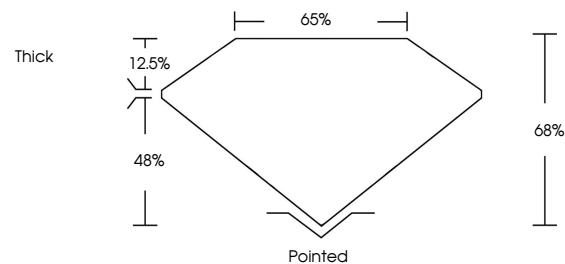
Fluorescence **SLIGHT**

Inscription(s) **IGI LG668464717**

Comments: This Laboratory Grown Diamond was created by Chemical Vapor Deposition (CVD) growth process.

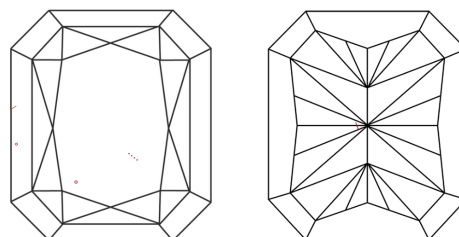
Indications of post-growth treatment.

PROPORTIONS



Sample Image Used

CLARITY CHARACTERISTICS



KEY TO SYMBOLS

Red symbols indicate internal characteristics.
Green symbols indicate external characteristics.

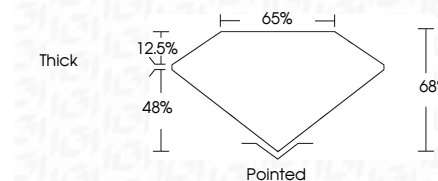
COLOR

D E F G H I J Faint Very Light Light

CLARITY

IF WS¹⁻² VS¹⁻² SI¹⁻² I¹⁻³

Internally Flawless Very Very Slightly Included Very Slightly Included Slightly Included Included



ADDITIONAL GRADING INFORMATION

Polish **EXCELLENT**

Symmetry **EXCELLENT**

Fluorescence **SLIGHT**

Inscription(s) **IGI LG668464717**

Comments: This Laboratory Grown Diamond was created by Chemical Vapor Deposition (CVD) growth process.

Indications of post-growth treatment.



IGI



December 23, 2024
IGI Report No LG668464717
CUT CORNERED RECT. MODIFIED BRILLIANT
9.22 X 6.28 X 4.27 MM
2.43 CARATS
FANCY VIVID PINK
VS 1
68%
65%
Thick
Pointed
EXCELLENT
EXCELLENT
SLIGHT
IGI LG668464717

Comments: This Laboratory Grown Diamond was created by Chemical Vapor Deposition (CVD) growth process. Indications of post-growth treatment.