



ELECTRONIC COPY

LG668455270
Report verification at igi.org



December 6, 2024

IGI Report Number **LG668455270**

Description **LABORATORY GROWN DIAMOND**

Shape and Cutting Style **OVAL BRILLIANT**

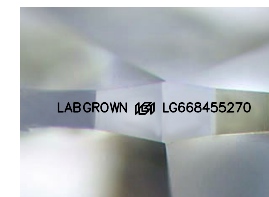
Measurements **10.60 X 6.55 X 3.75 MM**

GRADING RESULTS

Carat Weight **1.69 CARAT**

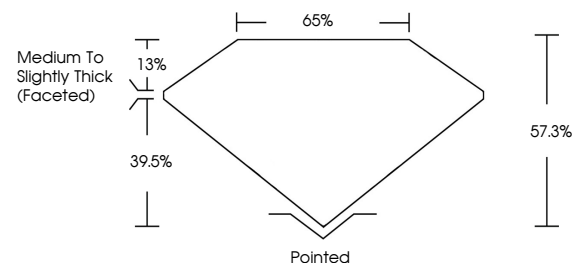
Color Grade **E**

Clarity Grade **VS 1**

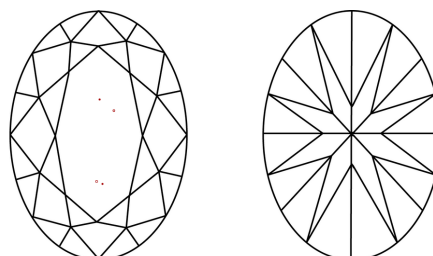


Sample Image Used

PROPORTIONS



CLARITY CHARACTERISTICS



KEY TO SYMBOLS

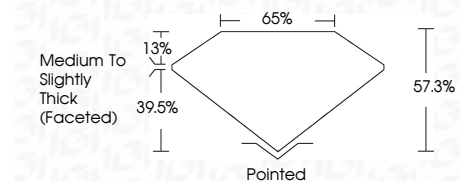
Red symbols indicate internal characteristics.
Green symbols indicate external characteristics.

COLOR

D E F G H I J Faint Very Light Light

CLARITY

IF	VS ¹⁻²	VS ¹⁻²	SI ¹⁻²	I ¹⁻³
Internally Flawless	Very Very Slightly Included	Very Slightly Included	Slightly Included	Included



ADDITIONAL GRADING INFORMATION

Polish **EXCELLENT**

Symmetry **EXCELLENT**

Fluorescence **NONE**

Inscription(s) **LABGROWN (IGI) LG668455270**

Comments: This Laboratory Grown Diamond was created by Chemical Vapor Deposition (CVD) growth process. Type IIa



December 6, 2024
IGI Report No. LG668455270
OVAL BRILLIANT
10.60 X 6.55 X 3.75 MM
1.69 CARAT
Color Grade E
Clarity Grade VS 1
Depth 57.3%
Table 65%
Medium to Slightly Thick (Faceted)
Culet Pointed
Polish EXCELLENT
Symmetry EXCELLENT
Fluorescence NONE
Inscription(s) LABGROWN (IGI) LG668455270
Comments: This Laboratory Grown Diamond was created by Chemical Vapor Deposition (CVD) growth process. Type IIa