



ELECTRONIC COPY

LG668442382
Report verification at igi.org



December 10, 2024
IGI Report Number **LG668442382**
Description **LABORATORY GROWN DIAMOND**
Shape and Cutting Style **ROUND BRILLIANT**
Measurements **7.39 - 7.42 X 4.53 MM**
GRADING RESULTS
Carat Weight **1.53 CARAT**
Color Grade **FANCY VIVID PINK**
Clarity Grade **VS 1**
Cut Grade **IDEAL**

December 10, 2024
IGI Report Number **LG668442382**
Description **LABORATORY GROWN DIAMOND**
Shape and Cutting Style **ROUND BRILLIANT**
Measurements **7.39 - 7.42 X 4.53 MM**

GRADING RESULTS

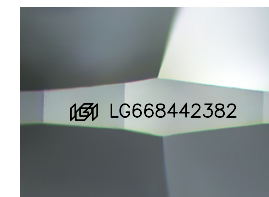
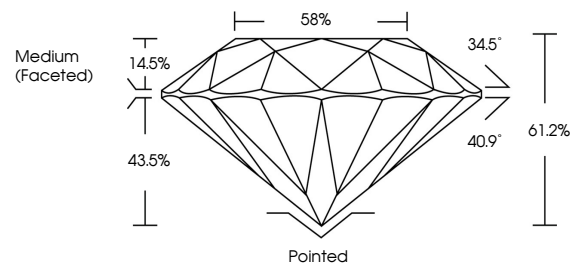
Carat Weight **1.53 CARAT**
Color Grade **FANCY VIVID PINK**
Clarity Grade **VS 1**
Cut Grade **IDEAL**

ADDITIONAL GRADING INFORMATION

Polish **EXCELLENT**
Symmetry **EXCELLENT**
Fluorescence **SLIGHT**
Inscription(s) **LG668442382**

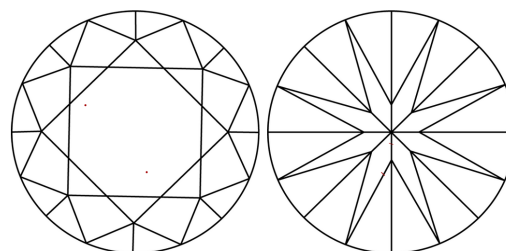
Comments: This Laboratory Grown Diamond was created by Chemical Vapor Deposition (CVD) growth process.
Indications of post-growth treatment.

PROPORTIONS



Sample Image Used

CLARITY CHARACTERISTICS



KEY TO SYMBOLS

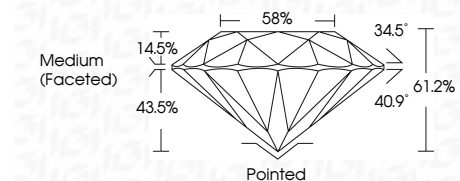
Red symbols indicate internal characteristics.
Green symbols indicate external characteristics.

COLOR

D E F G H I J Faint Very Light Light

CLARITY

IF	VS ¹⁻²	VS ¹⁻²	SI ¹⁻²	I ¹⁻³
Internally Flawless	Very Very Slightly Included	Very Slightly Included	Slightly Included	Included



ADDITIONAL GRADING INFORMATION

Polish **EXCELLENT**
Symmetry **EXCELLENT**
Fluorescence **SLIGHT**
Inscription(s) **LG668442382**
Comments: This Laboratory Grown Diamond was created by Chemical Vapor Deposition (CVD) growth process.
Indications of post-growth treatment.



December 10, 2024
IGI Report No LG668442382
ROUND BRILLIANT

1.53 CARAT
Carat Weight
FANCY VIVID PINK
Color Grade
VS 1
Clarity Grade
IDEAL
Depth
61.2%
Table
58%
Girdle
Medium (Faceted)

Pointed
Cut
EXCELLENT
Polish
EXCELLENT
Symmetry
EXCELLENT
Fluorescence
SLIGHT
Inscriptions(s)
 LG668442382

Comments: This Laboratory Grown Diamond was created by Chemical Vapor Deposition (CVD) growth process.
Indications of post-growth treatment.