



**ELECTRONIC COPY**

LG668442135  
Report verification at [igi.org](http://igi.org)



December 20, 2024  
IGI Report Number **LG668442135**  
Description **LABORATORY GROWN DIAMOND**  
Shape and Cutting Style **CUT CORNERED  
RECTANGULAR MODIFIED  
BRILLIANT**  
Measurements **7.61 X 5.32 X 3.75 MM**  
**GRADING RESULTS**  
Carat Weight **1.50 CARAT**  
Color Grade **FANCY INTENSE GREYISH  
YELLOW**  
Clarity Grade **VS 2**

**LABORATORY GROWN DIAMOND REPORT**

December 20, 2024  
IGI Report Number **LG668442135**  
Description **LABORATORY GROWN DIAMOND**  
Shape and Cutting Style **CUT CORNERED RECTANGULAR  
MODIFIED BRILLIANT**  
Measurements **7.61 X 5.32 X 3.75 MM**

**GRADING RESULTS**

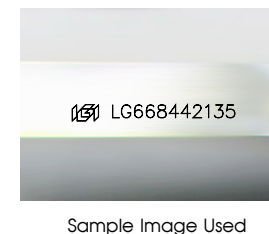
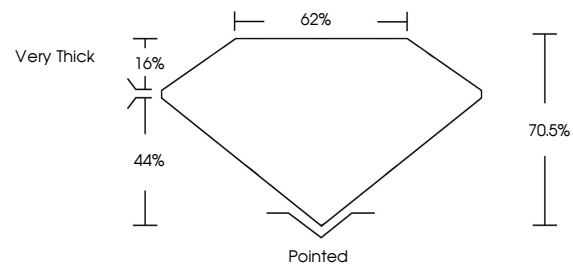
Carat Weight **1.50 CARAT**  
Color Grade **FANCY INTENSE GREYISH  
YELLOW**  
Clarity Grade **VS 2**

**ADDITIONAL GRADING INFORMATION**

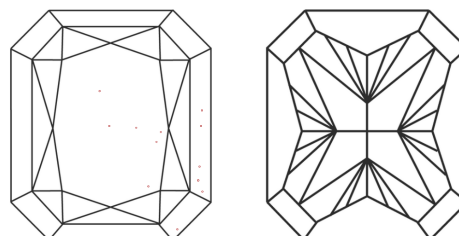
Polish **EXCELLENT**  
Symmetry **VERY GOOD**  
Fluorescence **NONE**  
Inscription(s) **IGI LG668442135**

Comments: This Laboratory Grown Diamond was created by Chemical Vapor Deposition (CVD) growth process.

**PROPORTIONS**



**CLARITY CHARACTERISTICS**



**KEY TO SYMBOLS**

Red symbols indicate internal characteristics.  
Green symbols indicate external characteristics.

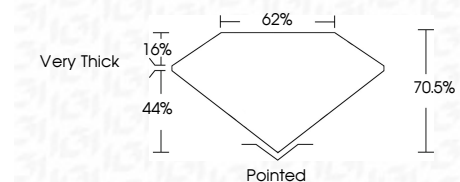
**COLOR**

D E F G H I J Faint Very Light Light

**CLARITY**

IF WS<sup>1-2</sup> VS<sup>1-2</sup> SI<sup>1-2</sup> I<sup>1-3</sup>

Internally Flawless Very Very Slightly Included Very Slightly Included Slightly Included Included



**ADDITIONAL GRADING INFORMATION**

Polish **EXCELLENT**  
Symmetry **VERY GOOD**  
Fluorescence **NONE**  
Inscription(s) **IGI LG668442135**  
Comments: This Laboratory Grown Diamond was created by Chemical Vapor Deposition (CVD) growth process.



December 20, 2024  
IGI Report No. LG668442135  
CUT CORNERED RECT. MODIFIED BRILLIANT  
1.50 CARAT  
FANCY INTENSE GREYISH YELLOW  
VS 2  
7.61 X 5.32 X 3.75 MM  
70.5%  
62%  
Very Thick  
Pointed  
EXCELLENT  
VERY GOOD  
NONE  
IGI LG668442135  
Comments: This Laboratory Grown Diamond was created by Chemical Vapor Deposition (CVD) growth process.