

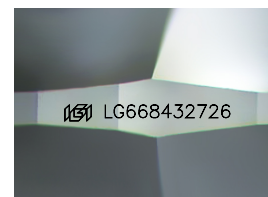
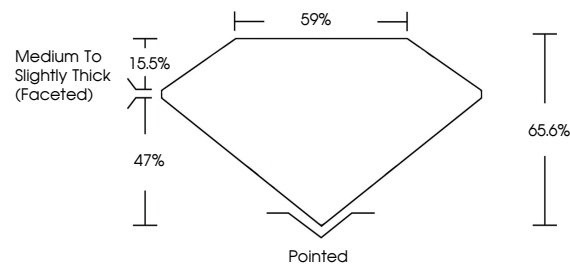


**ELECTRONIC COPY**

## LABORATORY GROWN DIAMOND REPORT

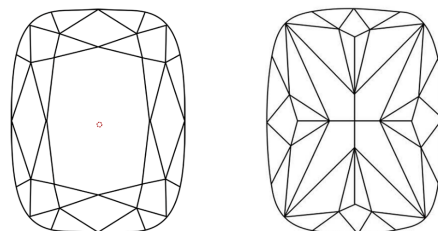
LG668432726  
Report verification at [igi.org](https://igi.org)

## PROPORTIONS



Sample Image Used

## CLARITY CHARACTERISTICS



### KEY TO SYMBOLS

Red symbols indicate internal characteristics.  
Green symbols indicate external characteristics.

## COLOR

D E F G H I J Faint Very Light Light

## CLARITY

IF                      VS<sup>1-2</sup>                      VS<sup>1-2</sup>                      SI<sup>1-2</sup>                      I<sup>1-3</sup>

Internally Flawless	Very Very Slightly Included	Very Slightly Included	Slightly Included	Included
------------------------	--------------------------------	---------------------------	----------------------	----------

## LABORATORY GROWN DIAMOND REPORT



January 9, 2025

IGI Report Number **LG668432726**

Description	LABORATORY GROWN DIAMOND
-------------	--------------------------

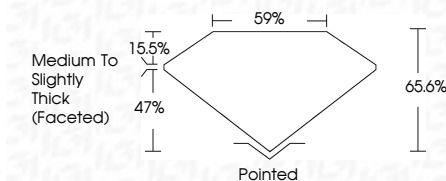
Shape and Cutting Style **CUSHION MODIFIED  
BRILLIANT**

Measurements **9.49 X 7.91 X 5.19 MM**

## GRADING RESULTS

Carat Weight **3.03 CARATS**

Color Grade D

Clarity Grade **VVS 1**

### ADDITIONAL GRADING INFORMATION

Polish **EXCELLENT**Symmetry **EXCELLENT**Fluorescence **NONE**Inscription(s)  LG668432726

Comments: As Grown - No indication of post-growth treatment.

This Laboratory Grown Diamond was created by High Pressure High Temperature (HPHT) growth process.  
Type II



© IGI 2020, International Gemological Institute

FD - 10 20

**www.igi.org**

THIS DOCUMENT WAS PRODUCED WITH THE FOLLOWING SECURITY MEASURES: SPECIAL DOCUMENT PAPER, INK SCREENS, WATERMARK BACKGROUND DESIGNS, HOLOGRAM AND OTHER SECURITY FEATURES NOT LISTED AND DO EXCEED DOCUMENT SECURITY INDUSTRY GUIDELINES

January 9, 2025  
GI Report No LG668432726  
CUSHION MODIFIED BRILLIANT

<b>2.49 X 7.91 X 5.19 MM</b>		<b>3.03 CARATS</b>
Carat Weight	Color Grade	D
Clarity Grade	VS 1	
Depth	66.6%	
Table	59%	
Girdle	Medium To Slightly Thick (cushion)	
Quiet	Pointed	
Polish	EXCELLENT	
Symmetry	EXCELLENT	
Fluorescence	NONE	
Identification	Gem 1 C4546 102704	

**Comments:**  
As Grown - No indication of post-growth treatment.