



ELECTRONIC COPY

LABORATORY GROWN DIAMOND REPORT

| | |
|-------------------------|--------------------------|
| December 6, 2024 | |
| IGI Report Number | LG668429007 |
| Description | LABORATORY GROWN DIAMOND |
| Shape and Cutting Style | CUSHION BRILLIANT |
| Measurements | 8.74 X 6.80 X 4.67 MM |

GRADING RESULTS

| | |
|---------------|-------------|
| Carat Weight | 2.09 CARATS |
| Color Grade | F |
| Clarity Grade | VVS 1 |

ADDITIONAL GRADING INFORMATION

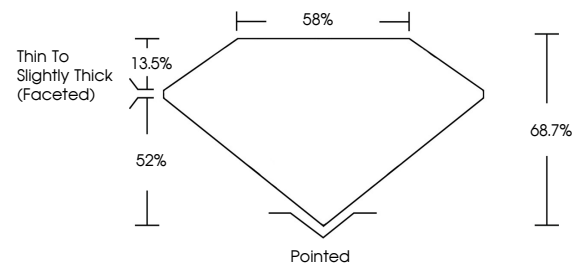
| | |
|----------------|----------------|
| Polish | EXCELLENT |
| Symmetry | EXCELLENT |
| Fluorescence | NONE |
| Inscription(s) | 16 LG668429007 |

Comments: As Grown - No indication of post-growth treatment.

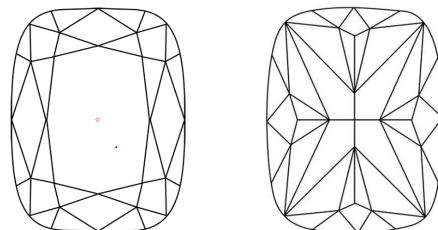
This Laboratory Grown Diamond was created by High Pressure High Temperature (HPHT) growth process.
Type II

LG668429007
Report verification at igi.org

PROPORTIONS

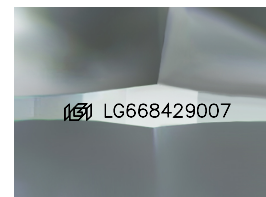


CLARITY CHARACTERISTICS



KEY TO SYMBOLS

Red symbols indicate internal characteristics.
Green symbols indicate external characteristics.



Sample Image Used

COLOR

D E F G H I J Faint Very Light Light

CLARITY

| IF | VS ¹⁻² | VS ¹⁻² | SI ¹⁻² | I ¹⁻³ |
|---------------------|-----------------------------|------------------------|-------------------|------------------|
| Internally Flawless | Very Very Slightly Included | Very Slightly Included | Slightly Included | Included |

LABORATORY GROWN DIAMOND REPORT



| | |
|-------------------------|--------------------------|
| December 6, 2024 | |
| IGI Report Number | LG668429007 |
| Description | LABORATORY GROWN DIAMOND |
| Shape and Cutting Style | CUSHION BRILLIANT |
| Measurements | 8.74 X 6.80 X 4.67 MM |

GRADING RESULTS

| | |
|---------------|-------------|
| Carat Weight | 2.09 CARATS |
| Color Grade | F |
| Clarity Grade | VVS 1 |

ADDITIONAL GRADING INFORMATION

| | |
|----------------|------------------|
| Polish | EXCELLENT |
| Symmetry | EXCELLENT |
| Fluorescence | NONE |
| Inscription(s) | (15) LG668429007 |

Comments: As Grown - No indication of post-growth treatment.

This Laboratory Grown Diamond was created by High Pressure High Temperature (HPHT) growth process.
Type II



www.igi.org

© IGI 2020, International Gemological Institute

FD - 10 20



THIS DOCUMENT WAS PRODUCED WITH THE FOLLOWING SECURITY MEASURES: SPECIAL DOCUMENT PAPER, INK SCREENS, WATERMARK, BACKGROUND DESIGNS, HOLOGRAM AND OTHER SECURITY FEATURES NOT LISTED AND DO EXCEED DOCUMENT SECURITY INDUSTRY GUIDELINE

December 6, 2024
IGI Report No LG668429007
CUSHION BRILLIANT

| | | |
|-----------------------|--|--|
| 8.74 X 5.80 X 4.67 MM | Carat Weight Color Grade Clarity Grade | 2.09 CARATS F VS 1 |
| | Depth Table Girdle | 68.7% 58% Thin To Slightly Thick (graded) |
| | Culet Polish Symmetry Fluorescence | Pointed EXCELLENT EXCELLENT NONE None / Case 90007 |

Comments:
As Grown - No indication of post-growth treatment.
This Laboratory Grown Diamond was created by High Pressure High Temperature (HPHT) growth process.