



**ELECTRONIC COPY**

LG668427826  
Report verification at igi.org



December 9, 2024  
IGI Report Number **LG668427826**  
Description **LABORATORY GROWN DIAMOND**  
Shape and Cutting Style **CUT CORNERED  
RECTANGULAR MODIFIED  
BRILLIANT**  
Measurements **7.09 X 4.88 X 3.28 MM**  
**GRADING RESULTS**  
Carat Weight **1.00 CARAT**  
Color Grade **E**  
Clarity Grade **INTERNALLY FLAWLESS**

December 9, 2024  
IGI Report Number **LG668427826**  
Description **LABORATORY GROWN DIAMOND**  
Shape and Cutting Style **CUT CORNERED RECTANGULAR  
MODIFIED BRILLIANT**  
Measurements **7.09 X 4.88 X 3.28 MM**

**GRADING RESULTS**

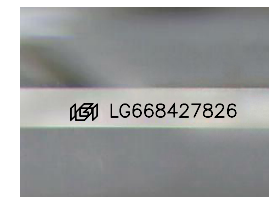
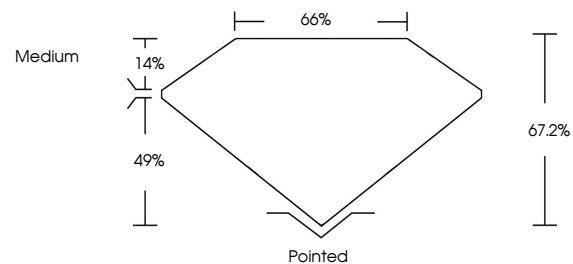
Carat Weight **1.00 CARAT**  
Color Grade **E**  
Clarity Grade **INTERNALLY FLAWLESS**

**ADDITIONAL GRADING INFORMATION**

Polish **EXCELLENT**  
Symmetry **EXCELLENT**  
Fluorescence **NONE**  
Inscription(s) **IGI LG668427826**

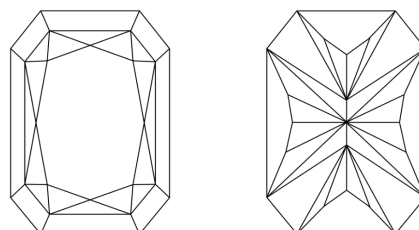
Comments: This Laboratory Grown Diamond was created by Chemical Vapor Deposition (CVD) growth process. Type IIa

**PROPORTIONS**



Sample Image Used

**CLARITY CHARACTERISTICS**



**KEY TO SYMBOLS**

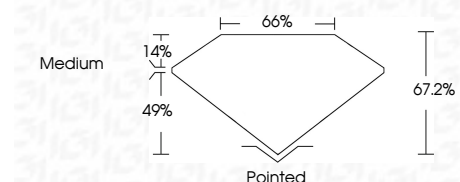
Red symbols indicate internal characteristics.  
Green symbols indicate external characteristics.

**COLOR**

D E F G H I J Faint Very Light Light

**CLARITY**

IF	VS <sup>1-2</sup>	VS <sup>1-2</sup>	SI <sup>1-2</sup>	I <sup>1-3</sup>
Internally Flawless	Very Very Slightly Included	Very Slightly Included	Slightly Included	Included



**ADDITIONAL GRADING INFORMATION**

Polish **EXCELLENT**  
Symmetry **EXCELLENT**  
Fluorescence **NONE**  
Inscription(s) **IGI LG668427826**  
Comments: This Laboratory Grown Diamond was created by Chemical Vapor Deposition (CVD) growth process. Type IIa



**IGI**



December 9, 2024  
IGI Report No. LG668427826  
CUT CORNERED RECT. MODIFIED BRILLIANT  
7.09 X 4.88 X 3.28 MM  
1.00 CARAT  
E  
Color Grade  
Clarity Grade  
Depth  
Table  
Girdle  
Medium  
Pointed  
Polish  
Symmetry  
Fluorescence  
Inscription(s)  
EXCELLENT  
EXCELLENT  
NONE  
IGI LG668427826

Comments: This Laboratory Grown Diamond was created by Chemical Vapor Deposition (CVD) growth process. Type IIa