

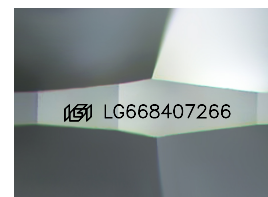
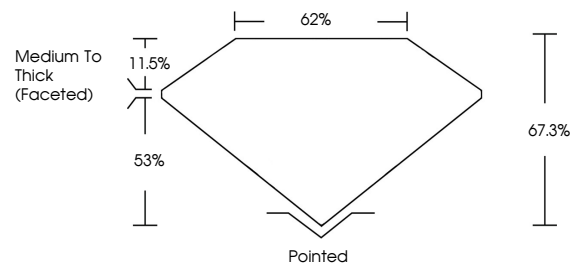


ELECTRONIC COPY

LABORATORY GROWN DIAMOND REPORT

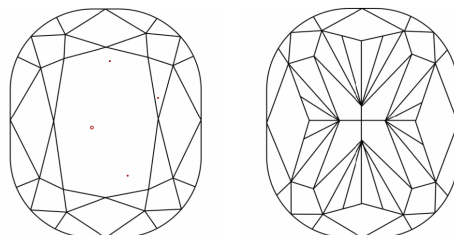
LG668407266
Report verification at igi.org

PROPORTIONS



Sample Image Used

CLARITY CHARACTERISTICS



KEY TO SYMBOLS

Red symbols indicate internal characteristics.
Green symbols indicate external characteristics.

COLOR

D E F G H I J Faint Very Light Light

CLARITY

IF WS¹⁻² VS¹⁻² SI¹⁻² |¹⁻³

Internally Flawless	Very Very Slightly Included	Very Slightly Included	Slightly Included	Included
------------------------	--------------------------------	---------------------------	----------------------	----------

LABORATORY GROWN DIAMOND REPORT



December 17, 2024

IGI Report Number **LG668407266**

Description	LABORATORY GROWN DIAMOND
-------------	--------------------------

Shape and Cutting Style **CUSHION MODIFIED
BRILLIANT**

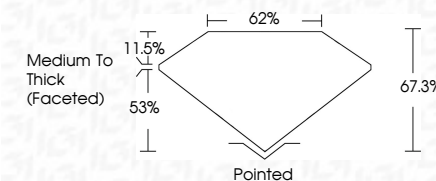
Measurements **9.29 X 8.71 X 5.86 MM**

GRADING RESULTS

Carat Weight **4.05 CARATS**

Color Grade

Clarity Grade VS 1



ADDITIONAL GRADING INFORMATION

Polish **EXCELLENT**Symmetry **EXCELLENT**Fluorescence **NONE**Inscription(s) LG668407266

Comments: This Laboratory Grown Diamond was created by Chemical Vapor Deposition (CVD) growth process.
Type IIa



© IGI 2020, International Gemological Institute

FD - 10 20



THIS DOCUMENT WAS PRODUCED WITH THE FOLLOWING SECURITY MEASURES: SPECIAL DOCUMENT PAPER, INK SCREENS, WATERMARK, BACKGROUND DESIGNS, HOLOGRAM AND OTHER SECURITY FEATURES NOT LISTED AND DO EXCEED DOCUMENT SECURITY INDUSTRY GUIDELINES

December 17, 2024
 GFI Report No LG668407266
 CUSHION MODIFIED BRILLIANT

2.29 X 8.71 X 5.66 MM	4.05 CARATS
Carat Weight	VS 1
Color Grade	67.3%
Clarity Grade	66%
Depth	Medium to Thick (faceted)
Table	Pointed
Girdle	EXCELLENT
Fluorescence	EXCELLENT
Symmetry	NONE
Measurements (mm)	4mm 2.64mm 0.76mm

Comments:
This Laboratory Grown Diamond was
created by Chemical Vapor Deposition
(CVD) growth process.

www.igi.org