



**ELECTRONIC COPY**

## LABORATORY GROWN DIAMOND REPORT

December 3, 2024	
IGI Report Number	LG668403427
Description	LABORATORY GROWN DIAMOND
Shape and Cutting Style	CUT CORNERED RECTANGULAR MODIFIED BRILLIANT
Measurements	8.13 X 5.59 X 3.80 MM

## GRADING RESULTS

Carat Weight	1.54 CARAT
Color Grade	D
Clarity Grade	VS 2

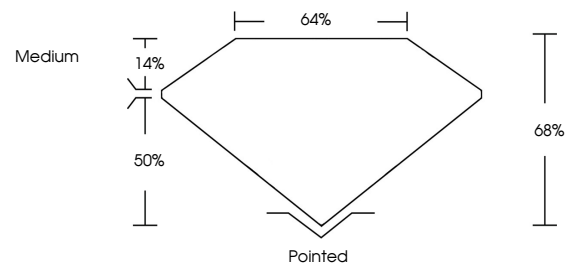
### ADDITIONAL GRADING INFORMATION

Polish	EXCELLENT
Symmetry	EXCELLENT
Fluorescence	NONE
Inscription(s)	15 LG668403427

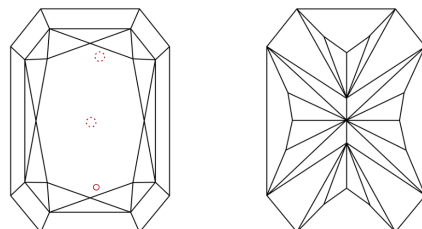
Comments: This Laboratory Grown Diamond was created by Chemical Vapor Deposition (CVD) growth process.  
Type IIa

LG668403427  
Report verification at [lgi.org](https://lgi.org)

## PROPORTIONS

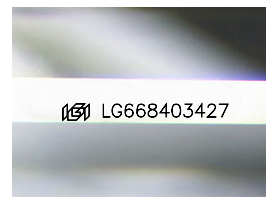


## CLARITY CHARACTERISTICS



### KEY TO SYMBOLS

Red symbols indicate internal characteristics.  
Green symbols indicate external characteristics.



Sample Image Used

## COLOR

D E F G H I J Faint Very Light Light

## CLARITY

IF      VWS<sup>1-2</sup>      VS<sup>1-2</sup>      SI<sup>1-2</sup>      I<sup>1-3</sup>

Internally Flawless	Very Very Slightly Included	Very Slightly Included	Slightly Included	Included
------------------------	--------------------------------	---------------------------	----------------------	----------

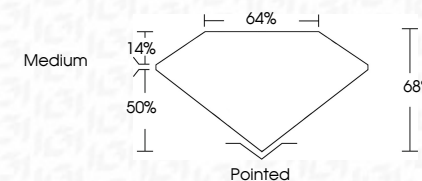
## LABORATORY GROWN DIAMOND REPORT



December 3, 2024	
IGI Report Number	LG668403427
Description	LABORATORY GROWN DIAMOND
Shape and Cutting Style	CUT CORNERED RECTANGULAR MODIFIED BRILLIANT
Measurements	8.13 X 5.59 X 3.80 MM

## GRADING RESULTS

Carat Weight	1.54 CARAT
Color Grade	D
Clarity Grade	VS 2



### ADDITIONAL GRADING INFORMATION

Polish	EXCELLENT
Symmetry	EXCELLENT
Fluorescence	NONE
Inscription(s)	(15) LG668403427
<p>Comments: This Laboratory Grown Diamond was created by Chemical Vapor Deposition (CVD) growth process.</p> <p>Type IIa</p>	



IG



© IGI 2020, International Gemological Institute

FD - 10 20

**www.igi.org**

THIS DOCUMENT WAS PRODUCED WITH THE FOLLOWING SECURITY MEASURES: SPECIAL DOCUMENT PAPER, INK SCREENS, WATERMARK, BACKGROUND DESIGNS, HOLOGRAM AND OTHER SECURITY FEATURES NOT LISTED AND DO EXCEED DOCUMENT SECURITY INDUSTRY GUIDELINE

December 3, 2024	CU Report No. LG568403427	CU CONFERRED RECT. MODIFIED BRILLIANT
13 X 13 X 5.69 X 3.80 MM		
Carat Weight	1.54 CARAT	
Color Grade	D	
Clarity Grade	VS 2	
Depth	69%	
Table	64%	
Grading	Medium	
Culet	Pointed	
Polish	Excellent	
Symmetry	Excellent	
Fluorescence	NONE	
Inscriptions(s)	1691 LG568403427	
Comments:		
	The Laboratory Grown Diamond was	
	certified as a Laboratory Grown Diamond	
	by the following process: Vapor Deposition	
	(CVD) growth process.	
	Type IIA	