

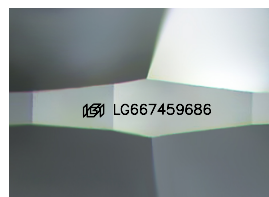
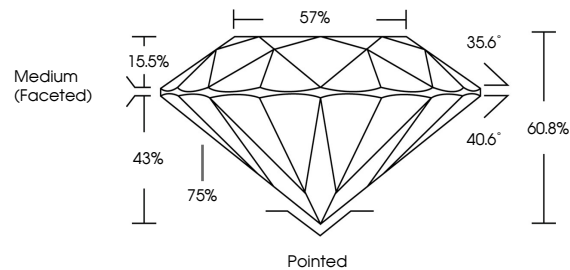


ELECTRONIC COPY
LABORATORY GROWN DIAMOND REPORT

December 3, 2024	
IGI Report Number	LG667459686
Description	LABORATORY GROWN DIAMOND
Shape and Cutting Style	ROUND BRILLIANT
Measurements	10.63 - 10.65 x 6.47 mm

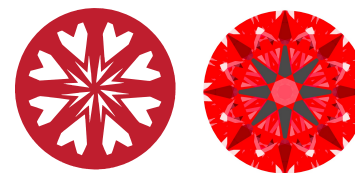
Carat Weight	4.45 CARATS
Color Grade	E
Clarity Grade	VVS 2
Cut Grade	IDEAL

Inscription(s) (131) LG667459686
 Comments: HEARTS & ARROWS
 This Laboratory Grown Diamond was created by
 Chemical Vapor Deposition (CVD) growth process.
 Type IIa

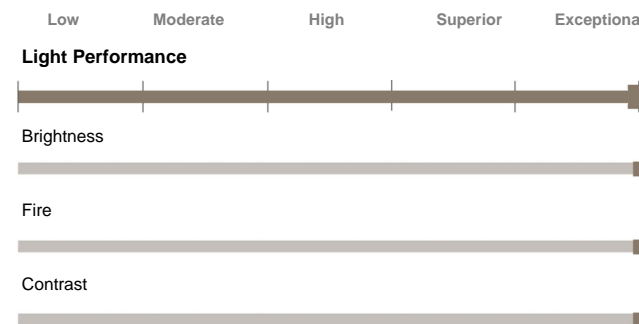


Sample Image Used

Light Performance Grade: Exceptional



Ideal-Scope representation



COLOR



CLARITY



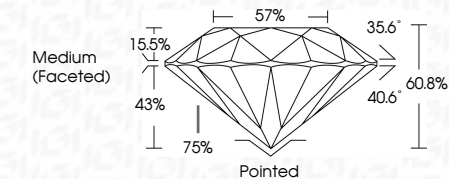
FD - 10 20



THIS DOCUMENT WAS PRODUCED WITH THE FOLLOWING SECURITY MEASURES: SPECIAL DOCUMENT PAPER, INK SCREENS, WATERMARK BACKGROUND DESIGNS, HOLOGRAM AND OTHER SECURITY FEATURES NOT LISTED AND DO EXCEED DOCUMENT SECURITY INDUSTRY GUIDELINES



Cut Grade	IDEAL
-----------	-------



Comments: HEARTS & ARROWS
This Laboratory Grown Diamond was created by
Chemical Vapor Deposition (CVD) growth process.
Type IIa



December 3, 2024
IGI Report No LG667459686
ROUND BRILLIANT

10.63 - 10.65 X 6.47 MM

10.03 - 10.08 X 6.47 MM	4.45 CARATS
-------------------------	-------------

Color Weight	Color Grade	E
4.40	4.40	4.40

Clarity Grade

Clarity Grade	VVS 2	IDEAL
Cut Grade		

Depth 60.8%

Table	57%
-------	-----

Girdle

Culet	Pointed	Excellent
Polished		

Polish	EXCELLENT
Symmetry	EXCELLENT

	EXCELLENT	NONE
Symmetry		
Fluorescence		

Fluorescence	Inscription(s)	NONE
		107 LG667459686

Description(s)	UJL LG007439688

Comments:
HEARTS & ARROWS

HEARTS & ARROWS
This Laboratory Grown Diamond was

in this laboratory. Growth conditions were created by Chemical Vapor Deposition (CVD) growth process.

(CVD) growth process.
Type IIa