

ELECTRONIC COPY

LABORATORY GROWN DIAMOND REPORT

December 2, 2024	
IGI Report Number	LG667452736
Description	LABORATORY GROWN DIAMOND
Shape and Cutting Style	CUT CORNERED RECTANGULAR MODIFIED BRILLIANT
Measurements	8.98 X 6.30 X 4.27 MM

GRADING RESULTS

Carat Weight	2.10 CARATS
Color Grade	E
Clarity Grade	VVS 2

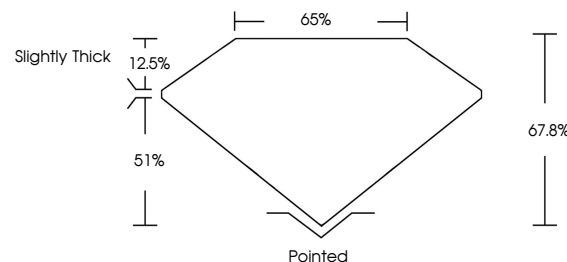
ADDITIONAL GRADING INFORMATION

Polish	EXCELLENT
Symmetry	EXCELLENT
Fluorescence	NONE
Inscription(s)	15 LG667452736

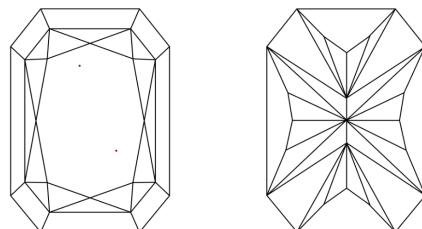
Comments: This Laboratory Grown Diamond was created by Chemical Vapor Deposition (CVD) growth process.
Type IIa

LG667452736
Report verification at lgi.org

PROPORTIONS

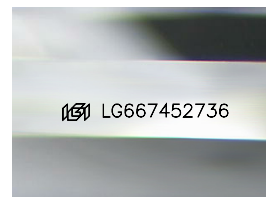


CLARITY CHARACTERISTICS



KEY TO SYMBOLS

Red symbols indicate internal characteristics.
Green symbols indicate external characteristics.



Sample Image Used

COLOR

D E F G H I J Faint Very Light Light

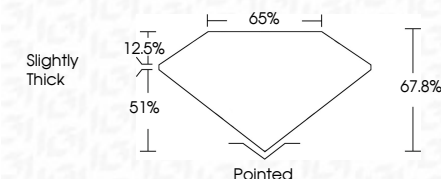
CLARITY

IF	VS ¹⁻²	VS ¹⁻²	SI ¹⁻²	I ¹⁻³
Internally Flawless	Very Very Slightly Included	Very Slightly Included	Slightly Included	Included

LABORATORY GROWN DIAMOND REPORT



December 2, 2024	
IGI Report Number	LG667452736
Description	LABORATORY GROWN DIAMOND
Shape and Cutting Style	CUT CORNERED RECTANGULAR MODIFIED BRILLIANT
Measurements	8.98 X 6.30 X 4.27 MM
GRADING RESULTS	
Carat Weight	2.10 CARATS
Color Grade	E
Clarity Grade	VVS 2



ADDITIONAL GRADING INFORMATION

Polish	EXCELLENT
Symmetry	EXCELLENT
Fluorescence	NONE
Inscription(s)	 LG667452736
Comments: This Laboratory Grown Diamond was created by Chemical Vapor Deposition (CVD) growth process.	
Type IIa	



© IGI 2020, International Gemological Institute

FD - 10 20

December 2, 2024	2.10 CARATS
GI Report No. LG467482736	E
CUJ CORNERED RECT. MODIFIED BRILLIANT	VVS 2
	67.6%
	65%
	Slightly Thick
	Pointed
	EXCELLENT
	EXCELLENT
	NONE
	68% LG467482736
9.98 X 6.30 X 4.27 MM	
Carat Weight	
Color Grade	
Clarity Grade	
Depth	
Table	
Grade	
Culet	
Polish	
Symmetry	
Fluorescence	
Inscriptions(s)	
<p>Comments:</p> <p>The Laboratory Grown Diamond was created by Chemical Vapor Deposition growth process. type IIa</p>	